

¡BIENVENIDO A MIAMI!

Explore the greatest boats in the world at both the 77th Annual Miami International Boat Show & Strictly Sail and the 30th Annual Miami Yacht Show.

By Doug Thompson

The five grandest days in boating take place in Miami, from February 15 to 19, 2018, at the 30th Annual Miami Yacht Show, and the 77th Annual Progressive Insurance Miami International Boat Show and Strictly Sail Miami.

Miami Marine Stadium Park & Basin once again plays host to the Miami Boat Show over President's Day weekend, attracting an estimated 100,000 boating enthusiasts. In addition, Strictly Sail Miami moves to the Miami Marine Stadium, for more than 1,400 boats in water and on land on Virginia Key. More food and beverage options, a new VIP deck lounge, Discover Boating Hands-On Skills Training workshops, and more than 200 boats available for sea trials for serious buyers further enhance this venue of an island oasis with expansive views of Biscayne Bay and the Miami skyline. Now in its third year at the Miami Marine Stadium, an enhanced transportation plan includes additional free water taxi pick-up and drop-off locations and free bus shuttles.

The Miami Yacht Show takes place on Collins Avenue across from the iconic Fontainebleau and Eden Roc hotels. The in-water-only display covers more than 1.2 million square feet

of space from 41st Street to 54th Street with extraordinary and uniquely designed yachts and superyachts arranged in dedicated new and brokerage sections, making it easier to find specific boats. The show has also improved the new Superyacht Miami location at Island Gardens Deep Harbour on Watson Island to accommodate deep-draft vessels up to 500 feet. To see the more than 20 superyachts on display at this location, interested guests can make appointments by contacting exhibitors with displays at the venue or with Show Management.

Miami Yacht Show parking options include the Convention Center parking and the 67th Street parking garages, water taxi service from both ends of the show, and valet service at the center of the show. Free bus shuttles will be available from the recommended parking garages to the five bus and water taxi stops on Collins Avenue. Here's a preview of the new boats at each of the shows.

SHOW INFO

FEBRUARY 15 – FEBRUARY 19

30th Annual Miami Yacht Show

Collins Ave. from 41st to 54th Streets, Miami Beach, FL
10 a.m. to 6 p.m. • showmanagement.com
Admission: \$25 daily

77th Annual Progressive Insurance Miami International Boat Show & Strictly Sail Miami

Miami Marine Stadium on Virginia Key
3501 Rickenbacker Causeway, Miami, FL
10 a.m. to 6 p.m. • miamiboatshow.com
Admission: \$40 for Premier Day (February 15)
\$25 every day thereafter



HORIZON YACHTS FD85

The Horizon FD85 fast-displacement motoryacht (87'1" LOA, 23'3" beam) features a striking exterior appearance, spacious layout and flexible speeds. Her design – a close collaboration between yacht designer Cor D. Rover and Horizon's in-house naval architecture team – boasts voluminous aft deck lounge seating to the expansive open flybridge. The Horizon FD85 is powered by twin CAT 1600 engines for a top speed of 20 knots and has a flexible cruise speed of 10-16 knots, with a range of 1,534 nm at 10 knots. The full-beam master stateroom is on deck and features a king bed, skylight and ensuite head. The ensuite guest staterooms include a bow VIP, mirrored aft VIPs, and a twin guest stateroom that converts from two singles to a double; crew quarters are located aft of the engines. On the main deck, large windows bring natural light into the main salon and formal dining, and the FD85 can be piloted from either the raised pilothouse helm or the exterior helm on the open flybridge. horizonyachtusa.com

MIBS



REGULATOR 34

The Regulator 34 (33'10" LOA, 10'11" beam) offers a design that maximizes space to the point of rivaling its 39-foot competitors. Regulator's signature deep-V hull, designed by Lou Codega, is matched by low bow rise and peak performance. The 34 runs to a top speed of 56.7 mph and its optimum cruising speed is 35 mph powered by twin Yamaha 350-hp engines. Fishermen's favorites include a 42-gallon transom livewell, 220-quart transom fish box, and 3X Deluxe Tackle Center with rigging station. Let out your lines with optional Taco Grand Slam 380 outriggers with carbon fiber poles, and keep the fish on ice with an optional refrigerated chill plate for the transom fish box. A berth features sleeping accommodations for two and abundant rod rack storage, and there is a starboard boarding and dive door and removable watersports tow bar. regulatormarine.com

TIARA SPORT 38 LS

The Tiara Sport 38 LS (38'1" LOA, 12'6" beam) offers supreme functionality with walkaround capabilities, an island-style outdoor galley, and bridge and lounge seats reachable via both port and starboard entries. Accessible social zones allow guests to experience a myriad of waterplay activities, dining in the open air, luxury lounging via a convertible sunpad, elegant cabin, and aft cockpit areas. Wraparound forward bow seating provides even more space to enjoy time on the water together. Powered by triple Yamaha 350-hp engines, she tops out a 55.6 mph and cruises 253 miles at 34.8 mph. Garmin's systems provide ease of use for the captain, and optional Yamaha Helm Master Joystick steering provides additional control whether underway or docking. tiarasport.com



MIBS

Available at



Serving Two Locations:

405 NW South River Drive, Miami, FL 33128 • 155 East Blue Heron Boulevard, Riviera Beach, FL 33404

(800) 826-5716 • www.LangerKrell.com

SEE US AT THE MIAMI BOAT SHOW BOOTH: C737 - C TENT



GARMIN MARINE.

These are times that call for fresh thinking and new choices. Especially in your boat's electronics. Garmin is proud to unveil the broadest, brightest and best selection of marine products we've ever offered. So, you'll find ample ways to justify outfitting or upgrading your helm station with new Garmin equipment this year. Highlighting our lineup are great choices in integrated autopilot systems for your powerboat or sailing vessel. Also, you'll find a full complement of HD and xHD marine radars. For deeper, clearer surveillance under water, there are powerful new digital sonar units that take high-definition fish targeting to a whole new level. And you'll also want to check out our new color touch-screen chartplotters with 3-D mapping imagery; our integrated VHF communications and satellite weather solutions; our growing array of NMEA 2000® instruments and networking options; plus, our new line of Garmin echo™ series fishfinders that feature exclusive Garmin HD-ID™ tracking technology to make catching the big ones even easier and more affordable. Garmin Marine. Making history at the helm.





AQUILA 36

Meet the all-new fishing and diving version of the Aquila 36 (36' LOA, 14' 7" beam), a sport catamaran powered by twin Mercury Verado outboards up to 350 hp. While still offering the conveniences of a large yacht including two comfortable cabins with private ensuite heads, she integrates key fishing and diving features. Fishing enthusiasts will appreciate the spacious livewell, generous storage with knife and tool holders, fishing rod holders, and large fish box, all thoughtfully placed. Dive tanks easily store away in the aft and easy access to the water is provided with an integrated dive ladder. Additional options include a second BBQ, more refrigerated space and extra storage. Powered by twin 250-hp engines, the Aquila 36 has a top speed of 27 knots, and cruises at 21 knots with a 282-nm range. aquilaboats.com

INTREPID 407 PANACEA

The Intrepid 407 Panacea (40' LOA, 11'1" beam) blends power and offshore performance with exceptional comfort and fishability. This 407 Panacea features a large, well-appointed cabin without compromising cockpit space. Forward wraparound bow seating allows for comfortable cruising and relaxing.

Equipped with Intrepid's signature transverse stepped hull to maximize stability, the 407 Panacea delivers a smooth ride at any speed and offers an integrated motor bracket for twin-, triple- or quad-engine configurations. Wood-free, PVC foam-cored construction and non-woven quad and uni-directional fiberglass fabrics are both infused and hand laid to provide strength, rigidity and safety without performance-robbing weight. intrepidpowerboats.com



HORIZON POWERCATS PC74

The Horizon Yachts PC74 (73'9" LOA, 28'4" beam) is in the series of luxury catamarans designed, engineered and built for cruising yachtsmen. The PC74's design was optimized from data obtained from extensive tank testing and CFD analysis (computational fluid dynamics). The PC74's layout includes a gourmet galley, formal dining, grand salon, full-beam master stateroom with walkaround king bed, two ensuite VIP staterooms, a third ensuite guest cabin for couples or singles, and comfortable crew quarters for three. Powered by twin Caterpillar C18 ACERT 1,150-hp engines, this boat runs to a maximum speed of 22 knots. horizoncatamarans.com



SUZUKI MAKES IT EASY AS 1-2-3



1.

**Six Years
of Protection
at no extra charge on
all new outboards 25
to 350 HP.**



2.

**Instant Savings
of up to \$800
on select models.
See your dealer
for details.**



These are limited time offers.
See your participating Suzuki Marine
dealer for all the details or visit
www.suzukimarine.com.



**THE
ULTIMATE
4-STROKE OUTBOARD**



3.

**Rates as low as
5.99% on new
Suzuki outboards
(OAC).***



Gimme Six Extended Protection promo is applicable to new Suzuki Outboard Motors from 25 to 350 HP in inventory which are sold and delivered to buyer between 01/01/18 and 03/31/18 in accordance with the promotion by a Participating Authorized Suzuki Marine dealer in the continental US and Alaska to a purchasing customer who resides in the continental US or Alaska. Customer should expect to receive an acknowledgement letter and full copy of contract including terms, conditions and wallet card from Suzuki Extended Protection within 90 days of purchase. If an acknowledgement letter is not received in time period stated, contact Suzuki Motor of America, Inc. – Marine Marketing via email: marinepromo@suz.com. The Gimme Six Promotion is available for pleasure use only, and is not redeemable for cash. Instant Savings apply to qualifying purchases of select Suzuki Outboard Motors made between 01/01/18 and 03/31/18. For list of designated models, see participating Dealer or visit www.suzukimarine.com. Customer and participating Dealer must fill out the appropriate form at time of sale. Instant Savings will be applied against the original dealer invoice (Suzuki will credit Dealer parts account). There are no model substitutions, benefit substitutions, rain checks, or extensions. Suzuki reserves the right to change or cancel these promotions at any time without notice or obligation. * Financing offers available through Synchrony Retail Finance. As low as 5.99% APR financing for 60 months on new and unregistered Suzuki Outboard Motors. Subject to credit approval. Not all buyers will qualify. Approval, and any rates and terms provided, are based on credit worthiness. \$19.99/month per \$1,000 financed for 60 months is based on 5.99% APR. Hypothetical figures used in calculation; your actual monthly payment may differ based on financing terms, credit tier qualification, accessories or other factors such as down payment and fees. Offer effective on new, unregistered Suzuki Outboard Motors purchased from a participating authorized Suzuki dealer between 01/01/18 and 03/31/18. "Gimme Six", the Suzuki "S" and model names are Suzuki trademarks or ®. Don't drink and drive. Always wear a USCG-approved life jacket and read your owner's manual. © 2018 Suzuki Motor of America, Inc.



MJM 35z

MJM's 35z (37'11" LOA, 11' beam) offers a delicate balance of comfortable, all-weather accommodations and excellent performance in a single vessel. Two factors explain the achievement: MJM's unique epoxy composite construction for a stronger, lighter and longer-lasting hull, and a sea-kindly, Zurn-designed, modified deep-V design with a greater waterline length-to-beam ratio of 3.5 to 1 versus the typical 2.7 or 3 to 1 ratio. This further explains her delicate appetite using fuel; this 35-footer gets 1.2 mpg with twin Mercury Verado 300-hp engines pushing her to 35 mph. Another plus includes comfort at speeds approaching the boat's 50 mph top end. The 35z hull shape gains stability the faster it goes as lifting strakes and chine flats redirect wave and wake energy into effective stabilizing forces. mjmyachts.com

Serving the South Florida boating community since 1947 with integrity and honesty.



2017 34' REGULATOR CC, TRIPLE 300 YAMAHAS, T-TOP, GARMIN ELECTRONICS, TURN-KEY DEMO, 85 HRS, SPECIAL DEAL!



2017 41' REGULATOR, QUAD YAMAHAS, T-TOP TOWER, GEN, A/C, GARMIN, FREE HULL SIDE PAINT, NEW '18 ON THE WAY, MUST SELL!!



2018 31' REGULATOR, TWIN 300 YAMAHAS, T-TOP, SIDE DOOR, GARMIN ELECTRONICS, COME SEE THE NEWEST MEMBER OF THE FLEET!

★★★★ IN STOCK IMMEDIATE DELIVERY ★★★★★

2018 23' REGULATOR, 300 Yamaha, Hard Top, Garmin Electronics
 2018 25' REGULATOR Twin 200 Yamahas, T-Top, Garmin Electronics
 2018 28' REGULATOR Twin 300 Yamahas, T-Top, Whisper Grey Hull, Garmin Electronics
 2018 34' REGULATOR SS, Twin 350 Yamahas, T-Top, Country Kitchen, Garmin Electronics

★★★★ COMING SOON ★★★★★

2018 REGULATOR 41' Custom Tower, Gyro, Gen, A/C, Garmin Package



300 N. Federal Hwy., Dania Beach, FL 33004
 (954) 921-8800 COZYCOVEMARINA.COM





Beauty & Protection



Viking's 72 Convertible with the eye popping beauty of the Awlcraft SE topcoat combined with Interlux Micron® Technology antifouling, makes this a hard charging fishing machine.

AWLGRIP®

Interlux®

akzonobel.com

All trademarks mentioned are owned by, or licensed to, the AkzoNobel group of companies. © AkzoNobel 2017.



BIMINI SANDS

Resort & Marina

FUN FISH FLOTILLA



"How to" Getaway Weekend.
Travel to the Bahamas
Safely as a Group.
Join Our Workshops for
Crossing and Boating Safety.

May 2-6, 2018
Bimini, Bahamas

Join Captain Chase &
Chase N Dreams Charters

REGISTER TODAY!

www.wahootournaments.com
954-925-2020

HATTERAS: GT45X FLYBRIDGE AND M90 PACACERA

Hatteras Yachts introduces two models: the GT45X Flybridge (44'7" LOA, 16'6") and the M90 Panacera (91'9" LOA, 22'6" beam). Starting with the GT45X model's proven offshore hull, large cockpit and full overnight interior accommodations, Hatteras added a flybridge for 2018. The flybridge features a Palm Beach-style upper helm with captain and companion chairs, next-generation electronics, comfortable seating and cavernous storage. Twin 1,150 diesels produce top speeds over 40 knots and a range of 334 nm at a cruise speed of 35-37 knots. The M90 Panacera is the newest in Hatteras' series of luxury motoryachts from 60 to 100 feet. Distinctive features include panoramic views through huge windows and a fold-out balcony off the salon. The generous beam makes for spacious living, including four ensuite staterooms accommodating up to eight guests and crew quarters for four. Top speed with optional twin 1,900-hp Caterpillar C32As is 24.7 knots, and range is 428 nm at 22 knots.

hatterasyachts.com



MYS

RADAR REDEFINED

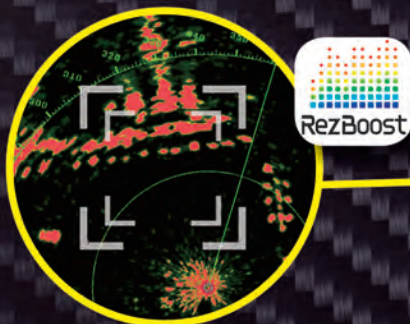
Solid-State Doppler Tracking

It's The **NXT** Generation

It's the comfort of knowing you are safe. It's Doppler Radar echoes changing color, showing which targets are a threat to you. It's instant tracking of up to 100 moving targets. It's Furuno's Bird Mode tracking birds to find the best fishing grounds. It's the "NXT" innovation in Radar, the all-new **DRS4D-NXT** Solid-State Doppler Radar for NavNet TZtouch & TZtouch2.



Target Analyzer™ function, facilitated by Doppler technology, immediately alerts you to targets (displayed in red) that pose a threat to your vessel. Simultaneously track up to 100 moving targets, displaying their speed & course vectors.



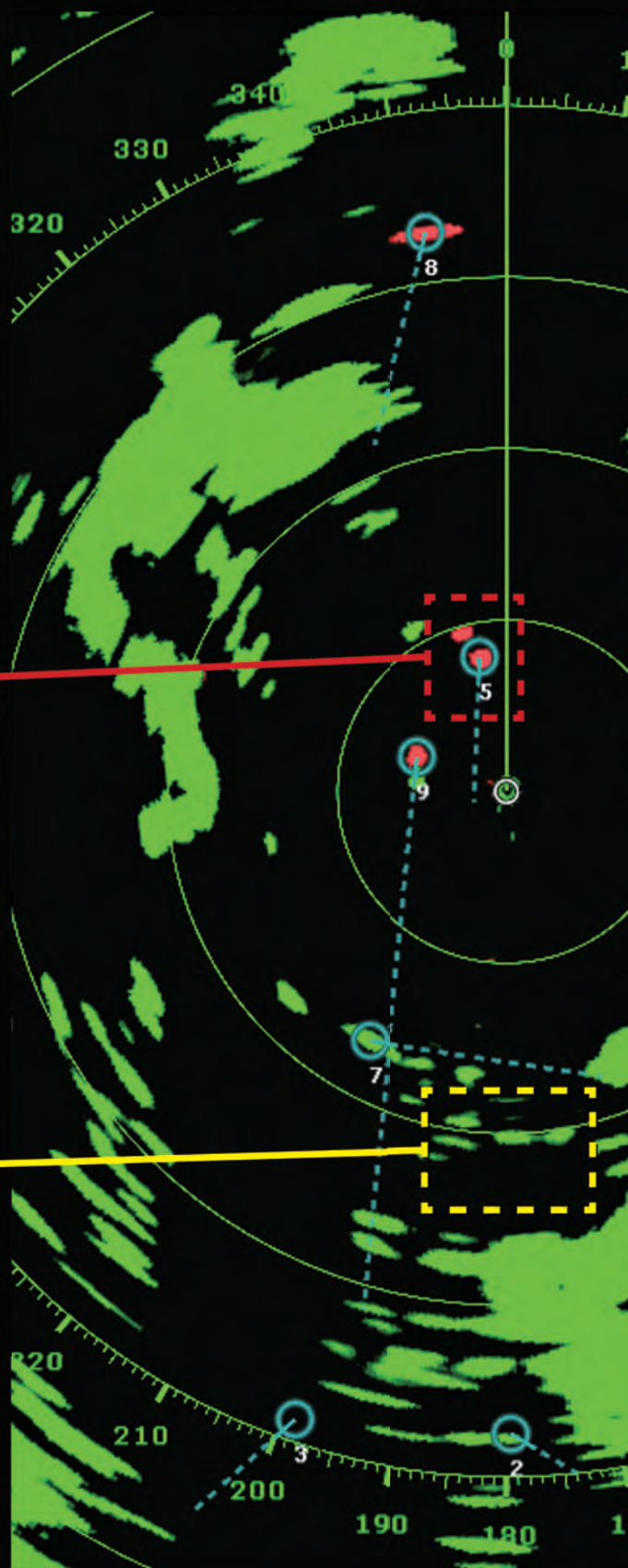
RezBoost™ beam sharpening displays higher resolution targets, similar to those from an open array antenna.



DRS4D-NXT - 24" Solid-State Doppler Radar

Experience The **NXT** Radar at Youtube.com/FurunoVideo

FURUNO



www.FurunoUSA.com



MARLOW EXPLORER 75E

The Marlow Explorer 75E (86'1" LOA, 20'6" beam) is an enclosed command bridge model selected by a cruising couple who wanted comfort, style and entertainment flexibility while on board. A spacious salon with satin finish teak and holly flooring features double ultra-leather settees with an elegant teak, large built-in bar. Forward of the galley is a large custom-designed dining area. With four staterooms in addition to crew quarters, there are no crowded spaces. On the upper aft deck, beautiful sunsets will be enjoyed from the custom built-in bar and exquisite settee. The Explorer 75E achieved over 30 knots on sea trials and can cruise from West Palm Beach to Newfoundland at 10 knots average speed. marlowyachts.com

Comfort Custom Mattresses & Marine Bedding Inc.

CUSTOM MATTRESSES FOR YACHTS & BOATS



QUALITY, COMFORT, LUXURY, & SUPPORT
QUICK TURNAROUND ★ WORLDWIDE SHIPPING
Coils, Premium Foam, Latex Foam, Memory Foam
Mattress Pads & Fitted Sheets

Fort Lauderdale, FL USA | contact: 1.954.496.8400
www.comfortcustombedding.com

Complete Custom Interiors & Yacht Management

Florida Yacht Interiors

Today's Interiors For Yesterday's Yachts



Refrigeration



Custom Fabricated Furniture with Storage



Remote Lifts for TV's

Custom Fabricated Furniture with Storage ■ Refrigeration ■ Remote Lifts for TV's
Flooring ■ Carpet ■ Teak ■ Countertops ■ Stone ■ Corian
Window Treatments ■ Cordless ■ Custom Fabricated Furniture & Upholstery
Canvas ■ Enclosures ■ Isinglass ■ Marine Grade Fabrics ■ Sunbrella

Custom Yacht Management By Our Captains

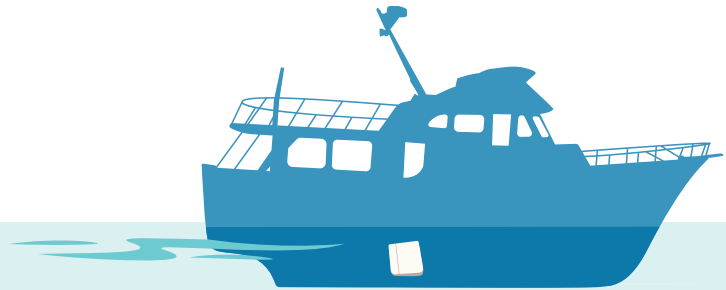
19 S Federal Highway, Dania, FL 33004 ■ info@Go2Fyi.com ■ Go2Fyi.com
954-925-2020



"The real sea trial was our 1500 mile trip from Stuart, FL to East Boothbay, MA. It knocked beam seas down tremendously (99-100%). It took 90% of the pitching motion out of head seas and 90% of the yawing motion out of the following seas." – Defever 53

Faster than any of the hydraulic stabilizers. No oil leaks." – Hatteras 48 LRC

"The system is unmatched both in design and performance." – Custom 107



Smooth the waves

with the only air-operated stabilizers in the world.



Are you looking for superior stabilization, patented technology, one that fits in limited space, comes with ease of installation AND no hull modifications/reinforcements?

If YES, then Gyro-Gale is for YOU. Our stabilizers are proven to be the fastest and most efficient operating system in the industry, stopping the roll before it begins — even in those following, quartering and beam seas.

- At rest or underway, roll is reduced by up to 95%
- Easy maintenance (filter change every 2 yrs/400 hrs)
- Intelligent automated stabilization
- Non-flammable, no messy hydraulics
- Vessels ranging from 30 ft. - 160 ft.
- MONEY BACK GUARANTEE – THAT'S HOW CONFIDENT WE ARE!



GyroGale.com
Stuart, FL USA
(772) 283-1711

SEA FORCE IX 41.5 SPORT

The Sea Force IX 41.5 Sport Center Console (41'8" LOA, 12' beam) comes loaded with features like dual transom dive/boarding doors and an electric head. Other features include the 16,000 BTU air conditioning in the cabin/console, which also is plumbed to the helm area, refrigerator and 440-pound-per-day ice chipper with above-deck dump. Stay comfortable in three-wide helm seating with flip-up bolsters and armrests, recessed seating across the transom and additional lounge seating in the bow. Intended to get you there in style, this tournament-ready sportfish will be equally well suited to the yacht tender and Caribbean cruising markets. Powered by triple 350-hp Yamahas, she runs to a top speed of 55 mph and cruises at 35 mph with a 400-mile range. seaforceix.com



THE NEW

ROYALFLUSH®



BRAVO



ESPRESSO

STYLE

STAMINA

RELIABILITY

Headhunter is pleased to present an updated style and function to the proven and patented Royal Flush lineup of floor and bulkhead mounted marine toilets. With a revised aesthetic presentation incorporating feedback from installers and designers, these toilets are perfect for updating an existing interior or incorporating into modern vessels.

3380 SW 11TH AVENUE
FORT LAUDERDALE, FLORIDA 33315
PHONE: +1 954-581-6996
HEADMASTER@HEADHUNTERINC.COM
WWW.HEADHUNTERINC.COM
WWW.HEADHUNTERINCSTORE.COM



HEADHUNTER®
WWW.HEADHUNTERINC.COM



PROPFX is an exciting and timely foul release coating that will bring about a momentous change for the marine industry and its challenges for protecting vessels exposure below the water line.

PROPFX is the culmination of years of research and the combination of a proprietary hybrid polysiloxane resin and patent-pending **Nano Fluid Surface Technology (NFST)**. **PROPFX** will revolutionize marine foul protection modalities and bring about a paradigm shift due to its broad scope of application and cost efficiencies.

Superior Features:

- Crystal clear, 100% solids, two component coating
- Zero VOCs, no solvents, no fumes and no odors
- Can be applied by all common painting processes and tools
- Required coating thickness 4 mil to max. 8 mil (100/200 microns)
- 1/3 the necessary labor, 100% clearcoat
- No primers or etching compounds required for bonding
- Encapsulated foul release agent cannot be rubbed or abraded off
- 2.38 times the coverage of all leading brands

Available in kit form for DIY

Wholesale to the marine industry

EDISON WORKS, INC.

Since 1993 • Distributor

954-494-9707 • www.clearkotesystems.com

Why take on the hassles and extra expense of travel to The Bahamas?

Experience the best of the Florida Keys here in beautiful Islamorada, the "Sportfishing Capital of the World."



PLANTATION YACHT HARBOR MARINA

- 85 slips all with pump-outs
- 30 / 50 / 100 Amp Service
- Cable Television available
- Fuel Dock with gas & diesel, Bathrooms, Showers, & Laundry
- Marina Located within a 42-acre park with pool and tennis courts, sandy beach, playground and a Dog Park
- Free WiFi

CALL TODAY FOR RATES
AND AVAILABILITY

Ph: 305-852-2381 • Fax: 305-852-5817

Email: Marinainfo@islamorada.fl.us

Islamorada, Village of Islands,
87000 Overseas Highway,
Islamorada, FL 33036



BOSTON WHALER:

350 REALM, 170 MONTAUK, 150 MONTAUK

Boston Whaler introduces three new models: the 350 Realm (35'6" LOA, 10'10" beam), 170 Montauk (17'4" LOA, 7'3" beam) and 150 Montauk (15'5" LOA, 6'6" beam). With triple Mercury Verado 350-hp engines, the 350 Realm runs to 52.7 mph at top end and cruises at 18.8 mph. Comfort extends throughout the 350 Realm, from the open bow with ample seating to the well-appointed cabin and the spacious cockpit with two rows of plush, convertible seating. A cockpit prep center with electric grill, freshwater sink, flip-up work station, and available refrigerator make it easy to keep everyone well fed and stocked with cold beverages. The two Montauks have been restyled to maximize every inch of their nimble size, while Boston Whaler's precision-engineered hull ensures a soft, smooth ride. whaler.com



SUNSEEKER

Sunseeker debuts three yachts: the 76 Yacht (77'5" LOA, 19'6" beam), the Manhattan 66 (68'3" LOA, 17'3" beam) and the Predator 57 MK II (59'10" LOA, 15'5" beam). The 76 Yacht's innovative use of glass enhances natural light, making this a bright and airy boat in which to relax and unwind with family and friends. Power via shaft drive is aplenty with two MAN V12 engine options providing speeds of up to 32 knots. The Manhattan 66 offers either twin fixed-pitch propellers or IPS drives providing speeds of up to 32 knots and a range of 500 nm. The flybridge creates the feeling of a much larger craft and has been designed with extensive seating throughout, large forward sunbathing areas and a well-equipped wet bar. The Predator 57 MK II's exterior boasts sleek yet oversized pillarless windows down to the side deck, which floods the interior with light and provides uninterrupted views from the salon. sunseeker.com



EVO 43

The EVO 43 (43'1" LOA, 20'7" beam) is the first model from the EVO brand and built by Blu Emme Yachts. Twin Volvo Penta IPS 600 engines offer a top speed of 38 knots, 30-knot cruise and range of 300 nm. The boat features a straight bow and high topsides that flow harmoniously toward the stern. The cockpit, like the rest of the craft, is entirely covered in teak and features an area that can be easily arranged through modular cube-shaped seats. The stern features the "XTension" bulwarks that open to increase usable space by 40 percent. Belowdecks accommodation is air-conditioned and features a double cabin to port, with its own entrance door, stowage area and wardrobe. The starboard head features a full-height shower and sink, and forward is a V-shaped dinette with a foldaway table that converts to another comfortable double bed. evoyachts.com



COBIA 320 CC

The Cobia 320 CC (32' LOA, 10'3" beam) builds on the company's success in the center console segment with a combination of advanced styling, a smart double-duty fishing and family layout, and big-water running performance. With a maximum horsepower of 700 and a 275-gallon fuel capacity, the 320 CC is a spacious fishing platform with range that can still be easily trailered to fishing tournament locations or inland lakes. Twin 35-gallon pressurized livewells, more than enough tackle storage, and holders for more than 20 rods mean you'll be ready when you reach the long-distance fishing grounds where the big ones are biting. For those looking for the finer touches, the 320 CC has a hidden bow table with electric lift, an elegantly featured step-down head with 6'2" of headroom, and a deluxe cushion package available in four color styles. cobiaboats.com



SO QUIET

Phasor Marine has begun delivering EPA Tier IV compliant marine generators. These machines are not utilizing EPA flex credit engines as are other marine generator manufacturers. The Kubota diesel engines utilized by Phasor are either Tier IV Final or EPA Tier IV Marine Certified up to and including the K4-30.0 kW model. All standard machines continue to utilize the Kubota or John Deere diesel engines coupled to the Mecc Alte electrical ends. These engines are approved for use with Bio-Diesel B5. New for the 2014 model year are two Ignition Protection Certified models rated at 4.5 kW and 7.0 kW operating at 1800 rpm. These machines are certified for use in gasoline-powered boats.

All Phasors continue to offer a 5-year limited warranty.

Peaceful

Effective and stable without the noise!

PHASOR
MARINE

Powered by Kubota

Kubota



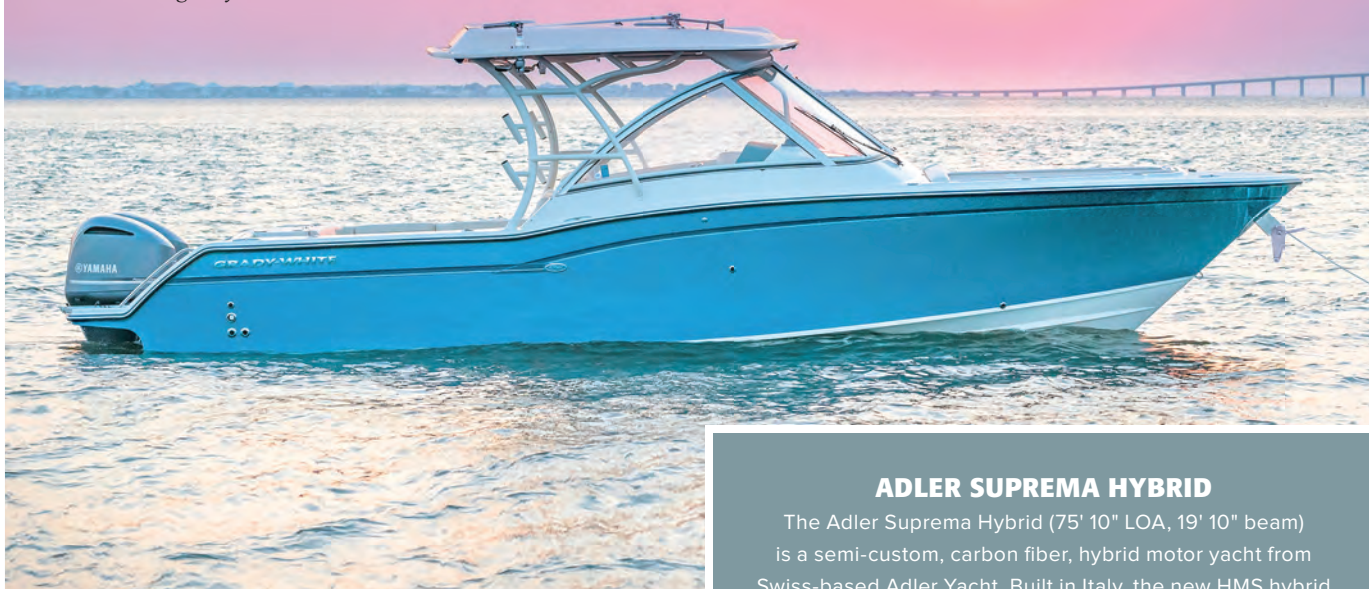
2880 Hammondville Road, Pompano Beach, FL 33069
Ph: 954.979.5899 | Fax: 954.979.4349

WWW.PHASORMARINE.COM

Marine • Industrial • Residential

GRADY-WHITE FREEDOM 325

The Grady-White Freedom 325 (33'1" LOA, 10'9" beam) offers versatility, ease of use, and friendly features including a port-side cockpit door, accessible roomy head and standard hardtop with self-contained retractable SureShade. The 325 is equipped for a full day off shore with signature Grady-White details like large bow boxes (a 180-quart starboard insulated box and extended dry storage to port for rods), a 32-gallon livewell and a 254-quart aft insulated fish box. The Freedom 325 rides on Grady's exclusive SeaV2® hull, and is powered by twin Yamaha 350-hp engines. Top speed is 48.5 mph, and cruising speed is 29.3 mph with a range of 443.5 miles. gradywhite.com



ADLER SUPREMA HYBRID

The Adler Suprema Hybrid (75' 10" LOA, 19' 10" beam) is a semi-custom, carbon fiber, hybrid motor yacht from Swiss-based Adler Yacht. Built in Italy, the new HMS hybrid propulsion system offers transatlantic range. Powered by twin Caterpillar C18 1,180-hp diesels and twin HMS E-Unit 100kW electric motors, the yacht has a top speed of 30 knots and cruises 3,400 nm at 8 knots. Under battery power the Adler can stay a full day in a bay, offering all amenities on board without generator or engines—no noise and fume and vibration free. Designed by Nuvolari-Lenard, the layout is elegant and spacious, combining interior comforts with the large exterior space and different layouts between three and five cabins. adleryacht.com / hms-hybridmarine.com



MYS

MARES 47 OUTBOARD EXPRESS

The Mares 47 outboard Express (47' LOA, 15' beam) is powered by quad Suzuki 350-hp engines for a top speed of more than 50 mph. The full-size master cabin offers a walkaround king bed and more than six feet of head room. In addition, the huge salon makes it comfortable for guests and offers plenty of seating, a pop-up TV and large sliding roof that opens. Mares' asymmetrical hull helps achieve high speeds that also offer ease of use and great stability whether in challenging sea conditions or just maneuvering at the dock. maresinternational.com



MIBS



You could get a discount when you combine your auto and boat policies.

GEICO®  **BoatU.S.®**
Making Boating Better, Together®

geico.com | 1-800-865-4846 | Local Office

See how much you could save on boat insurance.

Some discounts, coverages, payment plans and features are not available in all states or all GEICO companies. Boat and PWC coverages are underwritten by GEICO Marine Insurance Company. Multi-Policy Discount available to auto insureds that have purchased a boat policy through the GEICO Marine Insurance Company. GEICO is a registered service mark of Government Employees Insurance Company, Washington, D.C. 20076; a Berkshire Hathaway Inc. subsidiary. © 2018 GEICO

GRAND BANKS 60

The Grand Banks 60 (65'4" LOA, 19'2" beam) features leading-edge construction, reliable propulsion, and state-of-the-art maneuvering systems. The yacht is relatively light yet strong due to the carbon fiber-infused deck and cabin house. The Grand Banks 60 sports two 800-hp Volvo Penta D13 diesel engines that give the yacht a top speed of 36 knots and a range of 2,500 nm at 10 knots. The large, well-protected flybridge, wide side deck with high bulwarks and handholds, and an extended boat deck are built for ocean voyages and ensure protection from the elements. The large salon with electric windows provides space for families and friends, with an interior helm station designed for long-distance passage making. Three large staterooms and space for optional crew accommodations are well suited for adventure. grandbanks.com

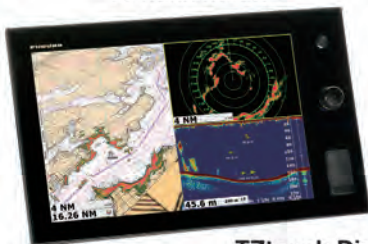


A TOUCH OF TECH

FURUNO
NAVnet
TZ2
touch



Available as
bracket mount
or flush mount



TZtouch Displays



- AIS • GPS • Radar
- Fish Finder • Satellite Weather

iPhone &
iPad apps
FREE



NavNet Remote
— iPad app only —
allows you to control your
NavNet TZtouch unit remotely



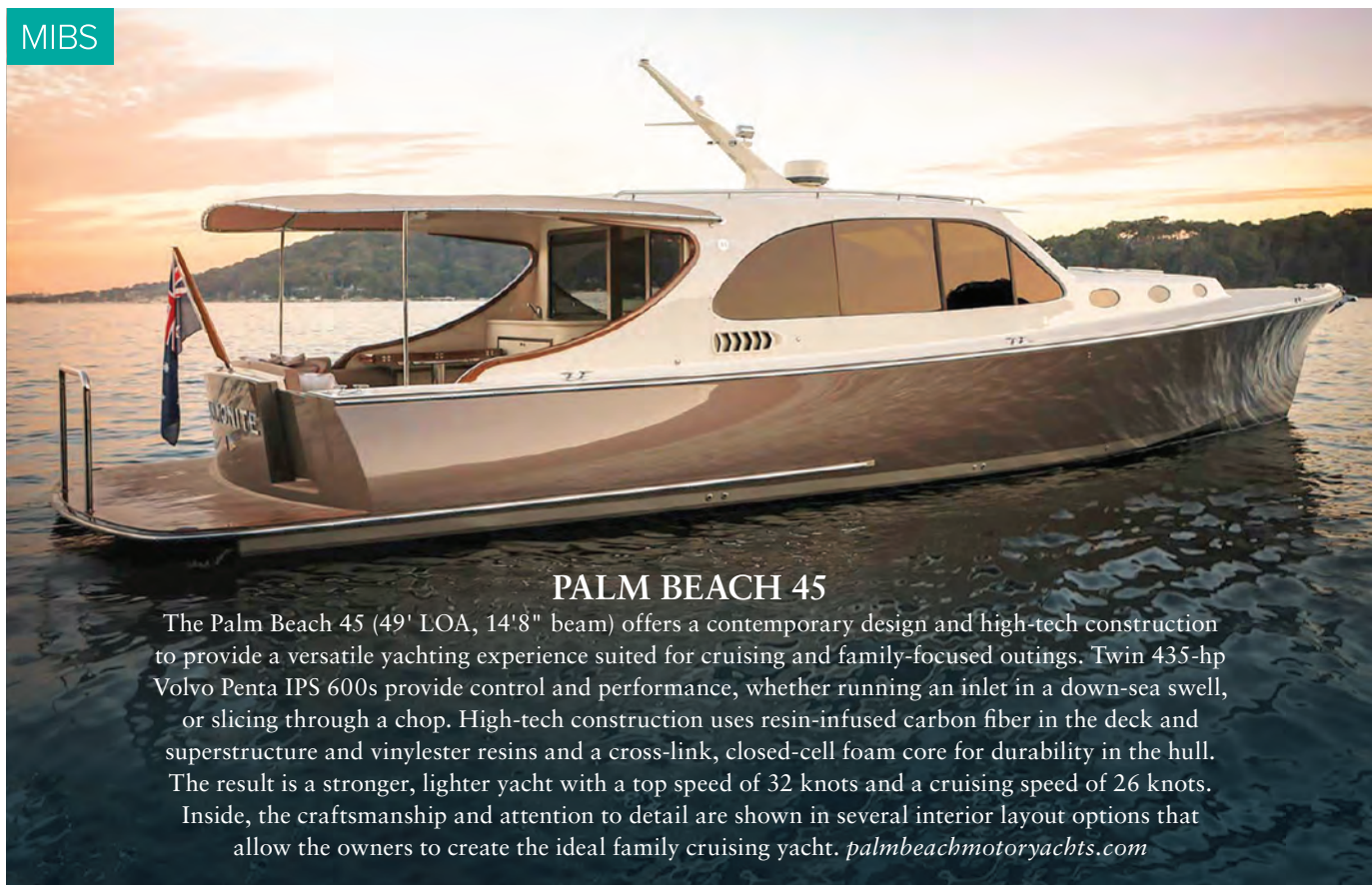
NavNet 3D DRS Antenna



TWO LOCATIONS:

405 NW South River Drive, Miami, FL 33128
155 East Blue Heron Blvd., Riviera Beach, FL 33404
(800) 826-5716 • www.LangerKrell.com

SEE US AT THE
MIAMI BOAT SHOW
BOOTH: C737
C TENT



PALM BEACH 45

The Palm Beach 45 (49' LOA, 14'8" beam) offers a contemporary design and high-tech construction to provide a versatile yachting experience suited for cruising and family-focused outings. Twin 435-hp Volvo Penta IPS 600s provide control and performance, whether running an inlet in a down-sea swell, or slicing through a chop. High-tech construction uses resin-infused carbon fiber in the deck and superstructure and vinylester resins and a cross-link, closed-cell foam core for durability in the hull. The result is a stronger, lighter yacht with a top speed of 32 knots and a cruising speed of 26 knots. Inside, the craftsmanship and attention to detail are shown in several interior layout options that allow the owners to create the ideal family cruising yacht. palmbeachmotoryachts.com

ON BOARD, ON GUARD!

MA Series
Extinguisher

Protect passengers and crew with our advanced fire suppression and gas & fire detection systems.



CMD5
Carbon Monoxide Detection Alarm

G-1CB
Gas Detection



12/24 VDC Hard-Wired or Battery-Powered



FIREBOY - XINTEX

A Darley Company

fireboy-xintex.com

OCEAN5 NAVAL ARCHITECTS STUART BOATWORKS 27

The Ocean5 Naval Architects 27' Stuart Boatworks Technology Demonstrator (26'10" LOA, 8'8" beam) showcases the latest technology in a top-flight center console. The technology aboard the boat includes virtual anchor via Seastar Optimus 360 Joystick steering, and GPS station keeping and roll-stabilization with a Seakeeper SK3 Gyro. Other features include a Lenco Auto Glide system and dual 400W solar array with C-Zone networked 17-inch Garmin chartplotter. Twin 200-hp Mercury outboards power the hull to a top speed of 48 mph, with a 37-mph cruising speed and a range of 300 miles.

ocean5.com

MIBS



BONADEO 37 WALKAROUND

The Bonadeo 37 Walkaround (LOA 37', beam 9'10") is built of composite, resin-infused Kevlar carbon fiber. Built as a collaboration between Bonadeo Boat Works and a client from Long Beach, Calif., the boat is rich in woodwork with teak decks, coamings and high-gloss Imron-coated teak toe rail and helm pod. The air-conditioned cabin offers 6'5" of head room, and includes a queen berth, galley and head. Forward of the helm is a large sunpad with an aft facing teak seat for two that includes a built-in cooler and livewell.

The helm seat hosts four custom tackle stations with an abundant amount of storage. The cockpit features two oversized fish/storage deck boxes, and the transom has a built-in 50-gallon livewell. Powered by triple Mercury Verado 350-hp engines, this boat hits a top end of 55 and cruises in the mid 40-mph range.

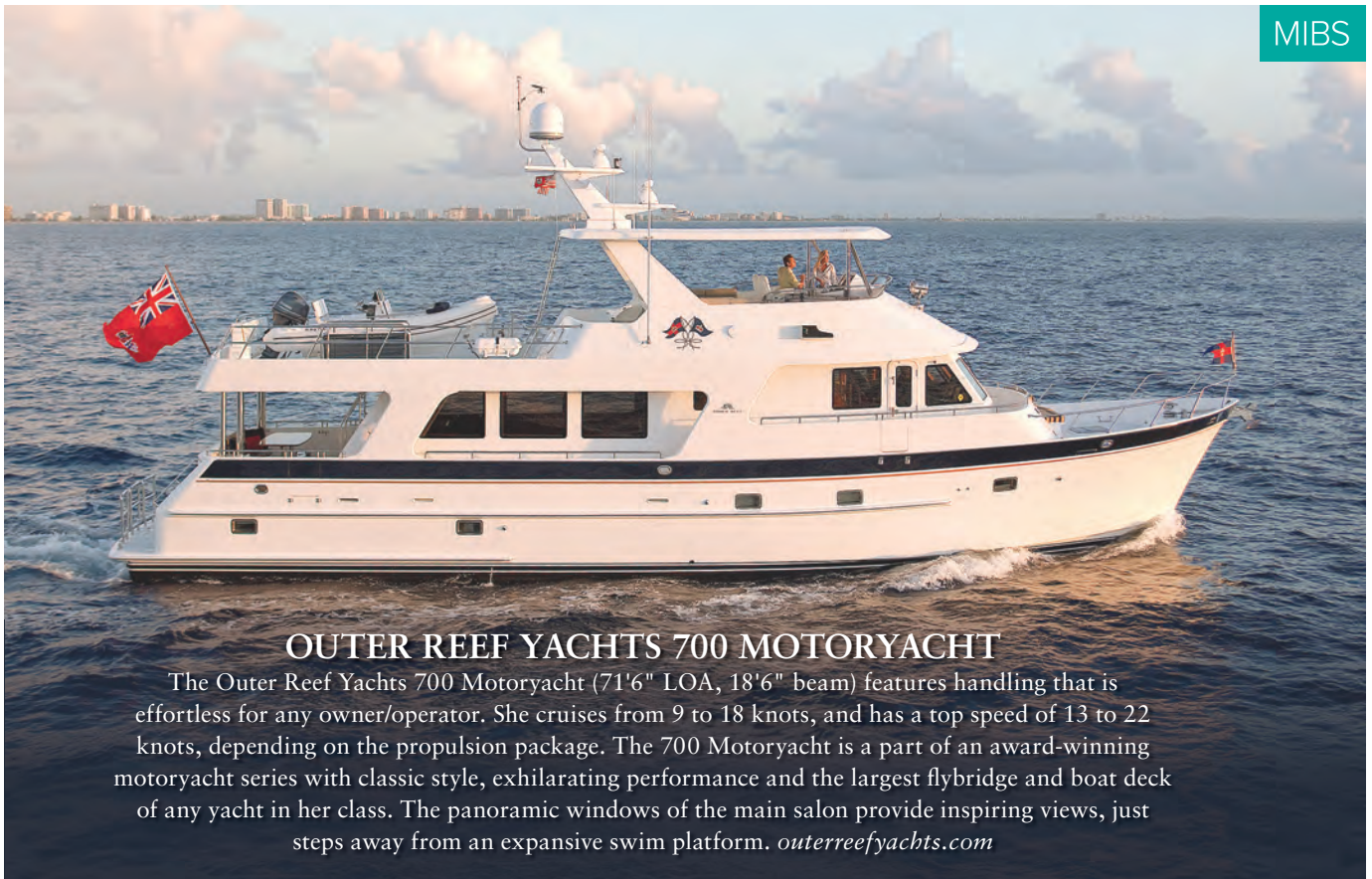
bonadeoboatworks.com

CARVER C34 COUPE (MIBS)

Carver Yachts C34 Coupe (34' LOA, 11'6" beam) offers a well-appointed galley with solid surface countertops, a comfortable U-shaped dinette with adjustable hi-low dining table and filler cushions, opening salon windows with screens, and a large, optional retractable sunroof provides ample ventilation and natural light. The starboard-side helm station incorporates an adjustable seat, allowing the driver to stand or sit as desired. It also provides substantial space for today's most popular navigation systems, instrumentation and electronics. Cabin headroom throughout main level is a best-in-class 6'8", with as much as 6'5" inches in the lower level. The forward stateroom features a queen-size berth, ample storage and plenty of natural light. Also on the lower level is a comfortable L-shaped sofa that converts to a full-size berth. The head offers an enclosed shower stall and a vanity with solid-surface countertop and vessel sink. Twin Mercury engines drive the C34 Coupe to a top speed of 35 knots and 24 knots at cruise with a range of 160 nm. carveryachts.com

MIBS





OUTER REEF YACHTS 700 MOTORYACHT

The Outer Reef Yachts 700 Motoryacht (71'6" LOA, 18'6" beam) features handling that is effortless for any owner/operator. She cruises from 9 to 18 knots, and has a top speed of 13 to 22 knots, depending on the propulsion package. The 700 Motoryacht is a part of an award-winning motoryacht series with classic style, exhilarating performance and the largest flybridge and boat deck of any yacht in her class. The panoramic windows of the main salon provide inspiring views, just steps away from an expansive swim platform. outerreefyachts.com

GET TO KNOW FARO BLANCO

BUY 3 NIGHTS AND GET 4TH FREE OR BUY 6 NIGHTS AND GET 2 ADDITIONAL NIGHTS FREE!*



FARO BLANCO MARINA

MILE MARKER 48 | 1996 OVERSEAS HIGHWAY, MARATHON, FLORIDA 33050 | 305-743-9018

FAROBLANCORESORT.COM

* Redemption must be consecutive with booking. Can not be used on multiple trips. May not be valid some weekends, holidays or special events. Limited daily availability. Not valid with other discounts. Valid through June 30, 2018.

SCOUT 355 LXF and 235 XSF

Scout Boats introduces two new models: the 355 LXF (34'11" LOA, 10'9" beam) and then 235 XSF (23'8" LOA, 8'6" beam). The 355 LXF is built on Scout's epoxy-infused, double-stepped, fuel-efficient hull. With triple Yamaha 300-hp outboard engines, the cruising speed is in the mid-30 mph range, while the top speed is in the mid 60-mph range. Built to accommodate a Seakeeper 3DC gyro stabilizer, the model also showcases optional hardtop-mounted solar panels that provide a trickle charge to the batteries. The 235 XSF runs to a top speed in the mid 50-mph range and a cruising speed in the low 30-mph range when powered by a 250-hp outboard engine. One notable feature is that Scout did away with the splash well at the transom by extending the outboard shaft allowing for a level platform across the entire swim platform. The model offers a standard powder-coated T-top hardtop with LED spreader lights fore and aft, and a fully integrated windshield. scoutboats.com



MIBS

MIBS

RANGER TUGS R-27

The Ranger Tugs R-27 (31'4" LOA, 8'6" beam) is outfitted to cruise, fish, and play in comfort and style. Powered by a single Yamaha F300 outboard motor, the new R-27 allows for more cruising in less time. The R-27 is equipped with the Garmin 7612 chartplotter, solar panel, bow thruster, LED lighting, private stateroom, enclosed head with shower, full galley with propane stove and refrigerator/freezer, outdoor electric grill and sink, ice box, and concealed ski tow. The curved front windshield and overhead glass atrium provide beautiful 360-degree views and generous light throughout the salon. Open the aft glass bulkhead in tandem with any of the hatches, windows, or port lights to deliver a fresh breeze throughout the cabin. Chefs will be delighted to cook in the full galley or to simply grill on the removable electric Kenyon grill. rangertugs.com



WESTPORT 112 AND 125

The Westport Yachts' 112 features a wide 23'9" beam (111'8" LOA) that creates a dramatically open and spacious salon further enhanced by expanses of view windows. An elegant dining area allows formal meal service for eight, plus four spacious staterooms to accommodate eight owners and guests. Powered by twin MTU 16V2000 engines, she cruises 2500 nm at 12 knots and has a top speed of 25 knots. Also at the show, the Westport 125 raised pilothouse motoryacht (125' LOA, 26'2" beam) is powered by twin MTU 16V2000 engines and tops out at 25 knots. The 125 sleeps 10 guests in five staterooms, including a full-beam master stateroom on the main deck forward with his-and-her baths and wardrobe closets. westportyachts.com



MYS

Staniel Cay Yacht Club



Like no other place on Earth.

Exumas, Bahamas



Bah 242.355.2024 • U.S. 954.467.6658
info@stanielcay.com • stanielcay.com



EXUMAS, BAHAMAS



CRUISERS YACHTS 42 CANTIUS

The new Cruisers 42 Cantius (43'2" LOA, 13'8" beam) is a coupe-style yacht crafted in the USA. The main deck is designed on a single level to have the cockpit, galley and salon become one when the large sliding door is open. The barbecue/wet bar area is situated at the transom to allow for a full-beam cockpit area with L-shaped seating. At the helm, 360-degree visibility is excellent. The accommodations deck features two open (master-like) staterooms. Each has a spacious, private head with stall shower. Standard power in the 42 Cantius is Volvo Penta IPS 500 with the option to upgrade to IPS 600. Top speed with IPS 500 engines is 30 knots. cruisersyachts.com

MYS+
MIBS



FAIRLINE TARGA 63 GT

Fairline's Targa 63 GT (LOA 65'4" beam 17'2") features the combination of Italian styling, rigorous and proven naval architecture by renowned Dutch firm Vripack and the hand-crafted, made-in-Great-Britain quality of Fairline's skilled craftsmen. The Targa 63 GT is powered by twin Caterpillar C18 shaft-driven engines and promises a top speed of 31 knots, with a cruising speed of 27 knots at a range of 300 nm. The GT variant features an extended salon for those where a light and spacious interior space is paramount. The boat features a fully glazed panoramic roof and a large sliding, glazed sunroof adding to the overall sense of space and light. fairline.com



MYS

PURSUIT DC 365

The Pursuit DC 365 (37'11" LOA, 12' beam) features instrumentation and controls at the helm that are ergonomically engineered, and an optional Garmin electronics suite makes the DC 365 a joy to operate. The cabin is easily accessible with a single-piece fiberglass door and features solid wood accents with modern finishes, a forward berth and a comfortable aft berth. You can overnight in your favorite cove with essential amenities including A/C, standup head and microwave. Other features include a large tempered-glass windshield with walk through, wide pathways from bow to stern and plenty of large storage compartments to hold dive tanks, a portable cooler and fishing rods. Powered by triple Yamaha F300s, the DC 365 delivers a top-end speed of 50-plus mph while cruising at approximately 35 mph. Expect to get 1.0 MPG under normal operating conditions. pursuitboats.com



MIBS

WATERMAKERS, INC.

MARINE DESALINATORS

COMMERCIAL • INDUSTRIAL • RECREATIONAL • LAND-BASED

**SIMPLY PUT,
OURS WORK BETTER,
FOR LONGER**

...and we regularly replace our competitors' systems with our own.

- Operator-Friendly & Service-Focused Designs
- Modular, Frame, & Containerized Systems
- Expertise In Marine & Land-based Applications
- 200 to 50,000+ GPD

***Fresh Water,
Any Time, Any Ocean***

**MIAMI BOAT SHOW
BOOTH C319
SPECIAL PRICING!**



**Over 30 Years Of Excellence.
Relied On And Trusted Since 1984.**

**888.34.FRESH • 954.467.8920
INFO@WATERMAKERS.COM
WATERMAKERS.COM
FT. LAUDERDALE, FL, 33316**

SCHAEFER 400

The Schaefer 400 (40'2" LOA, 12'7" beam) features a hardtop that opens to the sky. A generous deck with dining space strengthens Schaefer Yachts' tradition of maximizing the external space. With the lofty ceilings of the cabins, the 400 offers comfort and refinement. The 400 has a top speed of 35 knots, cruises at 25 knots and has a range of 174 nm. Designer Marcio Schaefer, will be on hand in Miami to personally answer questions and says his most notable design accomplishment is that he designed these boats to best accommodate the captain. schaefer-yachts.us

MYS



MYS



PEARL 80

The Pearl 80 (78'5" LOA, 19'6" beam) features exterior design by the naval architect Bill Dixon and the interior layout by Kelly Hoppen, with three distinctive interior styles to choose from. Excellent sea keeping combined with light-filled interiors and a layout that maximizes space are key features. The Pearl 80 is powered by twin MAN V12-1800 engines mated to V-drives, allowing optimal weight distribution and easier maintenance. The yacht runs to a top speed of 35 knots and cruises at 25 knots with a range of 300 nm. The basic layout has four ensuite double cabins, two with double beds and two with twin beds that convert to doubles. The full-beam owner's suite is situated in the center of the yacht, and all are on the lower deck. pearlyachts.com

JUPITER 43 SF

Jupiter's 43 SF (43'1" LOA, 12'6" beam) features a 360-degree fishing deck with port and starboard dive doors, massive fish boxes and livewell capacities. In addition, mezzanine cockpit seating sits atop a bait freezer and insulated drink box, and a center cabin with yacht level appointments and amenities offers comfort out of the elements. The cleanly designed helm can include triple Garmin 8622 screens flush mounted into a black acrylic glass panel on the console for a seamless look. The triple Release helm chairs provide a true sportfish helm. A fuel capacity of 602 usable gallons offers excellent range, with a comfortable 40-mph cruise and a 60-plus mph top end with quad Yamaha F350 outboards.

jupitermarine.com

MIBS



FLY



WATERMAKERS AIR

Your Way To The Out Islands

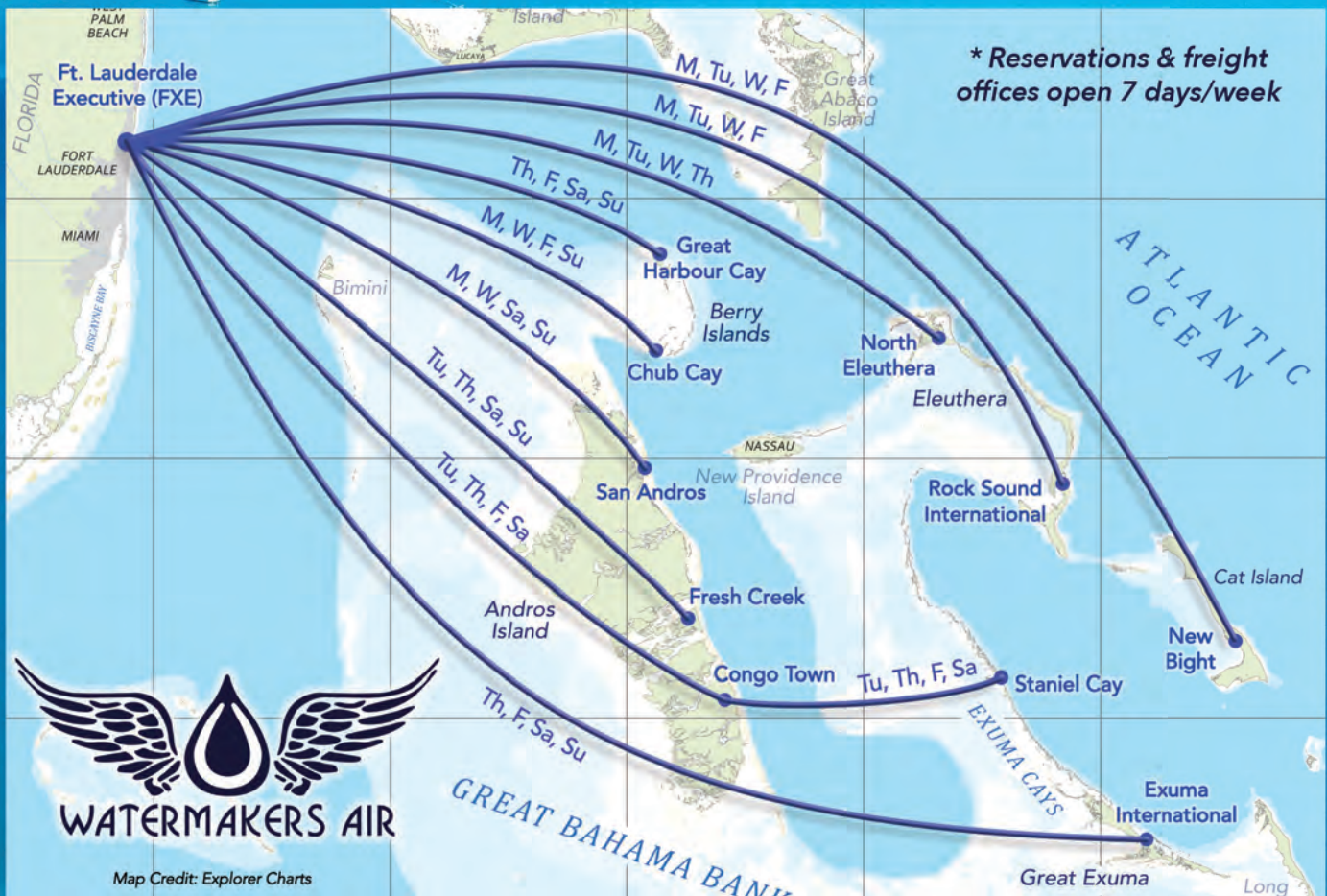
Frequent, Comfortable, & Reliable

Scheduled Passenger Flights

Ft. Lauderdale to Andros, Berry Islands, Cat Island, Eleuthera, & Exuma Cays

Freight Services • Private Charters

Fleet of Cessna Grand Caravans



watermakersair.com • 954.771.0330



passengers: info@watermakersair.com • freight: freight@watermakersair.com

All scheduled flights are operated by Exuma Cays Travel, Inc., a Public Charter Operator under the approved U.S. DOT 380 Public Charter Program, prospectus number PC-17-034.

MYS



CHEOY LEE BRAVO 72

The Cheoy Lee Bravo 72 (72' LOA, 19'10" beam) is a blend of the top technologies found in the marine industry. Owners will appreciate the spacious layout inside with four staterooms. There is also ample deck space with an oversized, covered flybridge. Outstanding performance and fuel efficiency is a result of an optimized hull design combined with latest Volvo Penta IPS technology, advanced composite hull structure and lightweight, honeycomb-cored interior. Technology additions continue with a Kohler Decision-Maker 3500 auto-parallel twin-generator system providing 46kW of power automatically when required. The Volvo Penta IPS 1050 power package drives the Bravo 72 to a top speed of 28 knots, with a cruising speed of 22 knots and 453-nm range. cheoylee.com

VIKING 68 C and 44 C

Viking Yachts debuts two models: the 68 Convertible (68'7" LOA, 19'2" beam) and the 44 Convertible (45'1" LOA, 16'4" beam). The 68 C is a four-stateroom, blue-water convertible with advanced propulsion and boat control technologies. The 68 C is designed and engineered to function equally as well as a tournament-ready offshore runner and a cruising yacht. The optional Seakeeper gyro stabilizer heightens the level of comfort, and anglers do battle in a 176-square-foot cockpit, guests watch from an air-conditioned mezzanine. Running on Viking's proven hull shape with a 12.1-degree transom deadrise, she has a 35-knot cruising speed and a top end approaching 40-plus knots. Also new, the two-stateroom 44 C features a raked bow, sloping sheer and swept-back deckhouse with black-masked windshield. With nearly six feet of freeboard, the 44 C's bow shoulders aside the seas with ease. The boat's wave-slicing entry gradually flattens moving aft where the deadrise provides lift and support for exceptional performance. The chines and strakes knock down spray, but also contribute to lift and stability. vikingyachts.com . 🐟

MYS

