



# THE 57<sup>TH</sup> ANNUAL FORT LAUDERDALE INTERNATIONAL BOAT SHOW

NOVEMBER 3-7, 2016

It's big. It's bold. It's the 57<sup>th</sup> Annual Fort Lauderdale International Boat Show (FLIBS). Boating enthusiasts from around the world descend on FLIBS to see and be seen. As a leading gathering of the recreational marine industry each year, the show is where manufacturers introduce new models, ideas and technology. FLIBS is also known as a buyers' show, where scores of boats are bought each day, from 18-foot runabouts at the Convention Center to 180-foot megayachts along the face

dock at the show's main waterway location on the ICW in front of the Bahia Mar Resort & Yachting Center across from Fort Lauderdale beach.

Similar to last year, this year's show spans 7 locations and will feature nearly 1,500 boats displayed across more than 3 million square feet of exhibit space. A well-planned network of parking, ground transportation, water taxis, and riverboats route visitors efficiently to an exciting array of boats, marine products and accessories. More than 1,000 exhibitors from 30 countries





# FL

FORT LAUDERDALE  
INTERNATIONAL  
BOAT SHOW

have products on display, but the real stars are the wide variety of boats and yachts from builders both foreign and domestic.

The dollar amount of vessels—lavish superyachts, sleek fishing boats, sporty runabouts, fast tenders, thunderous powerboats, and many more—available for tours and inspection by the public totals up to more than \$4 billion. For the second straight year the show includes the VIP Boat Show Experience program, a pass that includes a show ticket, water taxi

transportation and access to the Windward Club. The cost per person is \$155 on Prime Time Thursday, November 3, and \$140 for any of the other days of the show.

Here's a pre-show glance at some of the most exciting new boats that will be on display at the docks and the Convention Center—a roundup of the marine industry's best for 2016-2017.

For boat show schedule, access and admission information, log on to: [flibs.com](http://flibs.com).

— By Doug Thompson





*Absolute 50 Fly*

## ABSOLUTE

The 50 Fly is designed for functionality and flexibility, and that's especially true with the indoor living spaces. Rounded furniture edges and the linearity of the beds reflects the Italian design. Three cabins accommodate six guests overnight. Separate areas can be created for cooking, for lunch and sunbathing courtesy of the numerous sliding doors. Three additional sunbathing areas and an electrical sunshade for sun protection draw guests outdoors. On the flybridge, a sofa with a dining room table, a side sofa and more sunbathing offers three individual reclining backrests. The 50 Fly (49'10" LOA, 14'6" beam) also includes a sink, barbecue grill, icemaker, and refrigerator. [absoluteyachts.com](http://absoluteyachts.com)

economy. Featuring a modern helm area with forward-facing seating for three, mezzanine-style seating aft, dual in-deck fishboxes, baitwell, oversized tackle center, a standard transom door, and folding cockpit seat, this express is designed to be comfortable even on the most unpleasant of days. The Lou Codega hull design cuts through head seas and lands softly in the troughs. A full-beam windshield provides unobstructed views keeping the pilot and co-pilot warm and dry at the helm. Below you'll find a separate head, full galley and sleeping capacity for four. [albemarleboats.com](http://albemarleboats.com)



*Astondoa 65*

## ALBEMARLE

The new 29 Express (28'5" LOA, 10'6" beam) offers the ultimate in hardcore fishing amenities and comfort in a compact package. Serious anglers will appreciate its offshore ability, exceptional handling in rough seas and fuel

## ASTONDOA

The new Top Deck 65's theme is outdoor living, and the big party is under the hardtop-shaded platform with a retractable moonroof. The top deck offers plenty of places to relax; check out the see-through Jacuzzi and large sun



*Albemarle 29 Express*

lounge with backrests and seats. Two hinged, hydraulically activated "wings" to port and starboard increase the platform area even more when unfolded. Prep a meal outdoors thanks to a small fridge, sink, dishwater, and pullout grill. Below deck, the Top Deck 65 (65' LOA, 16'8" beam) has a media room with a flat-screen TV, lounge seating and a microwave. Astondoa included four staterooms, each with an ample head and a separate shower. Base power is twin Volvo Penta IPS 950 engines. [astondoa.com](http://astondoa.com)



*Azimut Verve 40*

## AZIMUT

The Verve 40 (40' LOA, 12'6" beam) is a hybrid—a blend of a traditional walkaround center console and day cruiser. The Verve 40 has a planing hull and is powered by triple 350-hp Mercury Verado outboards for a cruising speed of 37 knots and a top speed of 45 knots. Below, her Canaletto walnut interior includes a sleeping cabin with lockable sliding door, a dinette that converts to a queen-size berth, and a galley with a two-burner electric range, refrigerator and convection oven. Up top, the forward sunpad, the aft-facing bow seating or the L-shaped settee in the cockpit offer reclining options. A fold-down gunwale door to port enables impromptu swims off the back of the boat. [azimutyachts.com](http://azimutyachts.com)

## BERTRAM

The new Bertram 35 capitalizes on the soul and beauty of the original 31 yet offers a beamier and longer hull design. Michael Peters designed the hull for a projected top speed of 40-plus knots with twin



*Bertram 35*

460-hp diesels. Two engine boxes in the cockpit allow engine access and serve as mezzanine seating for anglers watching their bait. Construction features an infused vinylester, solid fiberglass, hull bottom with Kevlar centerline and strake reinforcements accompanied by a structural grid. Cruisers looking to explore waters where only center consoles can venture will appreciate the 2'6" draft.

The wide beam on the Bertram 35 (35'1" LOA, 12'5" beam) adds comfort while trolling at slow speeds and creates a substantial cockpit for anglers to work and cruisers to relax. [bertram.com](http://bertram.com)



*Bonadeo 45*

## BONADEO

Bonadeo custom builds all of its models, and the new 45 Walk Around is no exception (45'6" LOA, 13'6" beam). It

features an enclosed queen stateroom, a head with a separate shower, an aft entertainment room with 50-inch TV that converts to sleep two comfortably, and a full galley. Above deck are custom chilled drink boxes, a bait box and a freezer. The air-conditioned bridge holds a full wet bar and seating for six, while the raised mezzanine accommodates three; there are multiple cockpit options. The bow on the single level deck has seating for up to five with an optional cocktail table and integral drink cooler. A sunpad with torso-contoured safety seating handles up to three people.

[bonadeoboatworks.com](http://bonadeoboatworks.com)





*Boston Whaler 230*



## BOSTON WHALER

The surprisingly roomy 230 Outrage center console (23' LOA, 8'6" beam) joins sister models: 330, 280 and 250. By pushing the coaming around the bow further outboard, Boston Whaler's engineers maximized floor space, which contributes to the sense of stability and security for passengers in the bow. An ergonomically pleasing layout offers a full 360 degrees of walkaround and a standard head in the console. At the helm, a darker console face reduces glare, and an intuitive control panel with optional Raymarine E95 touchscreens provide seamless command. A single Mercury Verado outboard engine from 225 to

350 horsepower provides power, and the deep-V hull with full-length lifting strakes and a noticeable flair in the bow delivers a dry ride. [bostonwhaler.com](http://bostonwhaler.com)

## BUDDY DAVIS

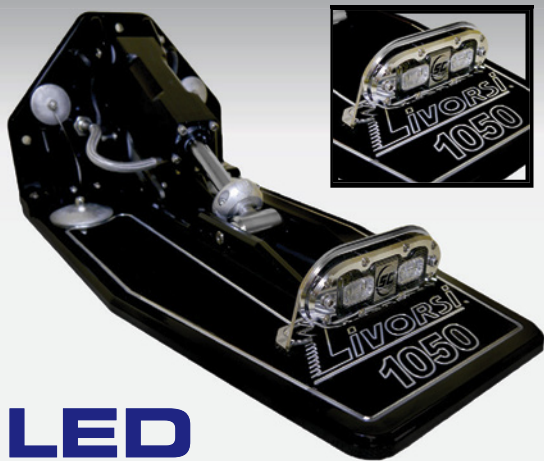
The latest center console to the Buddy Davis outboard line is the 42CC, joining Egg Harbor Group's 28 and 34 Center Consoles and the 38 Express. Developed with all-new tooling, the 42CC (42' LOA, 12'6" beam) maintains the distinctive Carolina lines of the famous builder and is available with the Seakeeper option and a carbon fiber hull. The center console's features include a fiberglass T-top,



## HOTTEST NEW PRODUCTS

SEE US AT  
**IBEX**  
BOOTH #1516

OCTOBER 4-6, 2016  
TAMPA CONVENTION CENTER



## LED

### UNDERWATER LIGHTS

Now on Livorsi Trim Tabs

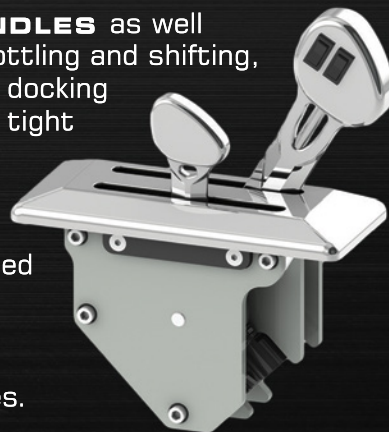
11 COLOR OPTIONS AND PRIVATE LABELING

## QR SERIES™

### DTS BILLET CONTROLS

Available in single and twin engine

- **SHORTER HANDLES** as well as electronic throttling and shifting, make it easier for docking and installation in tight helm spaces.
- Up to 3 trim switches integrated into the knob.
- For Mercury DTS compatible engines.



847.752.2700

[WWW.LIVORSI.COM](http://WWW.LIVORSI.COM)

[SALES@LIVORSI.COM](mailto:SALES@LIVORSI.COM)





*Buddy Davis 42CC*



*Carver C52 Coupe*

starboard dive door and forward lounge seat and storage area. The interior offers a galley with a refrigerator, sink and microwave. The Buddy Davis 42CC has sleeping accommodations for two plus a stand-up shower and head. With plenty of deck space for fishing and entertaining, the Buddy Davis 42CC is as much at home off shore or dropping anchor to enjoy the surroundings. [davisyachts.com](http://davisyachts.com)

### CARVER

The latest entry into the mid-size luxury yacht market is the C52 Coupe with its full-beam ensuite master

stateroom, spacious forward guest stateroom and head plus a large third stateroom. Step on board and you'll notice wide walkaround side decks that are easily accessible from the cockpit, an extra large swim platform and abundant foredeck seating. Open the glass cockpit doors to transform the salon and cockpit into a flowing entertainment space. The C52 Coupe (51'10" LOA, 15'8" beam) features one of the largest glass ceiling panels in its class and can be dimmed with the flip of a switch. Accommodations include a master suite and two spacious guest quarters, each with a private head and shower. [carveryachts.com](http://carveryachts.com)

**Staniel Cay Yacht Club**

info@stanielcay.com  
stanielcay.com

Facebook, Instagram, Pinterest, Twitter icons

**Ft. Lauderdale Boat Show**  
Booth 174, Bahia-Mar  
See you there!

Like no other place on Earth.

**Staniel Cay Yacht Club**  
SC  
EXUMAS, BAHAMAS

**Bah 242.355.2024**  
**U.S. 954.467.6658**





Chris-Craft Commander 42



## CHRIS-CRAFT

The Commander 42 marks Chris-Craft's first step into the cabin cruiser market through a range of lobster-style boats thanks to a joint venture with Italian yacht builder Austin Parker. Chris-Craft designed the Commander with two cockpit areas for entertainment—one aft and a second under a hardtop that will be enclosed—a large sunbed on the bow and a galley. Sleeping accommodations below include room for five people and a head with a separate shower. From the teak floors in the cockpit to the expert upholstery, the Commander 42 (42' LOA, 12'11" beam) has every bit the look and

workmanship of a Chris-Craft. Power is twin Volvo IPS 600 D6 435-hp engines. [chriscraft.com](http://chriscraft.com)

## COASTAL CRAFT

The 65 Concord (66'9" LOA, 17' beam) aluminum motor yacht makes her East Coast debut at FLIBS from Canadian builder Coastal Craft. Powered by twin Volvo IPS1200 engines, the Concord boasts a top speed of 33 knots, cruising speed of 27 knots and appreciated open water stability. The low displacement aluminum hull offers superior strength-to-weight ratio, fuel efficiency and improved range relative to other vessels her size. The ride



## The Finest Marine Tradesmen Under One Roof. Hinckley.

The experienced craftsmen and technicians at Hinckley are standing by to help with the smallest repair or the grandest refit. As authorized service providers to many boat builders, we welcome all makes and models and all work is guaranteed.

Hinckley Yacht Services Naples • [ServiceNaples@HinckleyYachts.com](mailto:ServiceNaples@HinckleyYachts.com) • 239.261.2870

Hinckley Yacht Services Stuart • [ServiceStuart@HinckleyYachts.com](mailto:ServiceStuart@HinckleyYachts.com) • 772.287.0923

Hinckley Yacht Services Savannah • [ServiceSavannah@HinckleyYachts.com](mailto:ServiceSavannah@HinckleyYachts.com) • 912.629.2400



HINCKLEY YACHT SERVICES  
Since 1928





*Coastal Craft 65 Concord*



*Cranchi E56 F*

in virtually any sea is soft, silent and secure. Two helm stations plus two docking stations, three staterooms, three heads, a spacious main salon, and a full-height engine room complement the handmade joinery and Sapele interior finishes. E-plex® Multiplex switching and monitoring put all controls at the fingertips via an iPad. (See our full review in November.) [coastalcraft.com](http://coastalcraft.com)

## CRANCHI

Cranchi launches the E56 F, part of the new Evoluzione line. It's the second yacht that was developed with famed Italian architect Christian Grande. This collaboration

resulted in new furniture designs and materials on the E56 F (56'5" LOA, 15'10" beam) giving the yacht a modern feel. The E56 F will be available with a hardtop or an arch. Powerplants are two Volvo Penta IPS D11/800 engines, or buyers can upgrade to 725-hp Volvo Penta IPS 2 2xD11/950 engines. With room for 14 passengers and a 490-gallon fuel tank, the E56 F can be out on the water for extended periods of time. Just bring the fun. [cranchi.it](http://cranchi.it)

## CRUISERS

The 60 Fly (59'10" LOA, 16' beam) boasts exceptional space and comfort combined with easy handling thanks

# WATERMAKERS, INC.

## MARINE DESALINATORS

COMMERCIAL • INDUSTRIAL • RECREATIONAL • LAND-BASED

Simply put, ours work better, longer



...and we regularly replace our competitors' systems with our own.



- Operator-Friendly & Service-Focused Designs
- Modular, Frame, & Containerized Systems
- Expertise In Marine & Land-Based Applications
- 200 To 50,000+ GPD Watermakers

**Over 30 Years Of Excellence.  
Relied On And Trusted Since 1984.**

**FT. LAUDERDALE BOAT SHOW - EQUIPMENT TENT  
BOOTH 548 - SPECIAL SHOW PRICING!**

954.467.8920 • (888) 34-FRESH  
INFO@WATERMAKERS.COM  
WATERMAKERS.COM  
2233. S. ANDREWS AVE.  
FT. LAUDERDALE, FL, 33316

*Fresh Water,  
Any Time, Any Ocean*







Cruisers 60 Fly



to joystick docking. The open cockpit with U-shaped dinette opens to the salon courtesy of full-length sliding glass doors. The formal dining area can be paired with a plush, U-shaped settee where guests can relax with a cocktail. The aft galley on the 60 Fly is well equipped for easily serving both the cockpit and salon. A full-beam king master stateroom offers owners their own private oasis, café table and seats, large closet, and private ensuite; the forward VIP queen stateroom has a walk-in closet. The flybridge offers great views and exceptional piloting plus a spacious helm and lounge seating complete with a wet bar. [cruisersyachts.com](http://cruisersyachts.com)

## CUTWATER

The Cutwater Sport 242 (23'11" LOA, 8'6" beam) welcomes the outdoors with the removable enclosures of the roof, side windows and rear bulkhead. Features include a forward cabin with wraparound seating and a high-low convertible table, private head, two sinks with hot and cold water, drop-in barbecue grill, microwave, TV/DVD, Fusion stereo system, and optional air conditioning. The outboard version of the CS-242 comes standard with an aerated fish well integrated into the transom and room for a fishbox. The Sport 302 (30' LOA, 10' beam) features a revised cabin top and a

## WORLD'S ONLY PNEUMATIC STABILIZERS

*Celebrating 40 years of Marine Stabilization!*



*"The boat has gained 2 knots of speed and the stability has improved to 90% underway and 80% at anchor."* Sunseeker 82'



Stuart, FL USA • +1(772) 283-1711 • [www.gyrogalestabilizers.com](http://www.gyrogalestabilizers.com)





*Cutwater Sport 242*



*EdgeWater 248CX*

cockpit that's ideal for fishing with a 30-gal. livewell, large fish box, rod holders, sink, Euro-style galley, a drop-in barbecue grill, and accommodates six in three separate berths. Twin counter-rotating Yamaha 250-hp outboards power the Sport 302. [cutwaterboats.com](http://cutwaterboats.com)

## EDGEWATER

Designed to perform with a single outboard, the EdgeWater 248CX (24'6" LOA, 8'6" beam) is equipped with a single, reliable Yamaha F300 four-stroke outboard. This new model features EdgeWater's most ergonomic and sophisticated deck design for a dual

console and offers redesigned bow seating with plusher amenities, including forward-facing seat backs with built-in armrests. The helm provides great sightlines and improved ergonomics for the captain and enough dash space for a 16-inch Garmin screen. The 248CX's bait prep station's modern design offers many configurations, including a removable premium cooler storage, grill, sink, storage, and cutting board. These new additions create a more spacious cockpit with a full transom-width foldout seat while maintaining a large transom baitwell. The transom walkthrough provides easy access for watersports. [ewboats.com](http://ewboats.com)



Imagine a Center Console Fishing Boat, with a Tempered Glass Windshield, large Fiberglass Cabin, Deep Bow Seating, and a Patented StraightTrac™ Performance Hull. These are just a few of the innovative features aboard the new 2016 Barracuda Boats 238 OCR and 238 OCC Flat Cuddy.

The Barracuda 238 OCC Flat Cuddy offers a completely flat foredeck, for fishing or sunning, while offering 5'-3" standup headroom in the spacious cabin. Available Air Conditioning and 24 Gallon fresh water system make this the perfect 23 foot weekender.

However, the Barracuda 238 OCR Runabout offers the best of both worlds. The immense open bow seating allows comfortable cruising, with deep backrests and a bow ladder for beach access. The bow

table converts to a huge sun pad, or a forward fishing platform with fish box and 360° walkaround capability. Yet, the Barracuda 238 OCR still features a step down cabin, with 5'-3" headroom, AND a 7 foot long quarter berth bed under the bow for napping!

"The Barracuda's Crossover Design, with Family Friendly Features, and Sport Utility Capabilities will be immediately realized with features that surpass those of traditional Center Consoles," says Anthony Kalil, President of Barracuda Boats in Palm City, Florida.

### Specs:

LOA 22'-9"	• Beam 8'-6"
22" deadrise	• 300 Max HP
40 Gal Livewell	• In Floor Fishbox
115 gal fuel capacity	

**HONDA**  
**MARINE**



**Barracuda Boats, LLC**

(772) 485-1501 | [www.barracudaboats.com](http://www.barracudaboats.com) | Facebook: Barracuda Boats





Everglades 273cc

## EVERGLADES

The new 273cc is a hybrid inshore/offshore boat. Her low-profile, powder-coated bow rails and pop-up cleats along with the casting platform and bow seating provide the space to make cast netting live bait easy. She comes ready to fish (27'3" LOA, 9'3" beam) with flush-mounted rod holders, standard under-gunwale rod racks, circulating livewell, and fishbox space. Everglade's 360LXC also flaunts its spacious 100-square-foot lounging area at FLIBS. The 360LXC (35'4" LOA, 10'8" beam) comes standard with a 32" retractable flat-screen, electric stovetop and outdoor cooking area, abundant food and cooler storage, and a fully equipped wet bar and mixing station. An aft bench seat comfortably seats six while the redesigned helm with ergonomic captain and companion seating has room for three. [evergladesboats.com](http://evergladesboats.com)



Fairline Squadron 48

## EVO

The Evo 43 (43'1" LOA, 14'8" beam) is the first creation of the new Italy-based Evo Yachts brand. Built out of resin-infused GRP, steel and glass, the Evo 43 offers reduced weight for greater fuel efficiency. Powered by twin Volvo Penta IPS 600 engines and drivers, she has a range of 300 miles at 38 knots. The design features a straight bow and high topsides that flow harmoniously toward the stern. The cleats and fenders disappear, leaving clean lines that fully comply with safety requirements on board. The straight-lined superstructure incorporates an 8mm wedge-shaped tempered glass windshield. Don't miss this newcomer to the U.S. boating scene. [evoyachts.com](http://evoyachts.com)



Evo 43

## FAIRLINE

The Squadron 48 (50'8" LOA, 14'2" beam) premieres at FLIBS. The Squadron 48's expansive flybridge creates a sociable environment with a large seating area around a dining table that can be lowered to convert into a sunpad. There's also forward-facing seating alongside the upper helm and a submersible bathing platform which offers a spectacular way to enjoy the water and cool off when the day is hot. The Squadron 48 offers 870 horsepower for speeds up to 30 knots with a cruising speed of 26 knots for a range of 260 nautical miles. [fairline.com/en](http://fairline.com/en)





## FERRETTI

The 850 is one of two model introductions this year by Ferretti Yachts. The yacht's strikingly bold profile and sharp angles give it a strong and aggressive personality. The main deck enhances the yacht's dynamic presence thanks to a single-glazed window that cuts across the entire superstructure. The profile is completed by the flybridge with its optional fore-and-aft hardtop over the raised pilothouse. The Ferretti Yacht 850 (85'4" LOA, 20'7" beam) offers generous space below deck for owners and guests. The airy master stateroom was designed in the style of the main deck salon. The lower deck hosts two spacious VIP cabins, one amidships on the port side and the other forward. A fourth starboard cabin is fitted with twin beds. All the cabins have ensuite heads and separate shower. [ferretti-yachts.com](http://ferretti-yachts.com)

## FORMULA

The new 430 Super Sport Crossover (43' LOA, 12' beam) offers incredible versatility with 40 linear feet of cockpit space and a cabin that includes a convertible dinette/sleeping berth, aft stateroom, full galley, and a stand-up head compartment. A fiberglass hardtop with



*Formula 430 Super Sport Crossover*

a motorized glass sunroof protects the cockpit's triple command seating. The helm features the latest in electronic goodies from Raymarine, Mercury DTS with SmartCraft VesselView, and electronic shift and throttle for the quad Mercury 300 Verado

outboard motors. Buyers can upgrade to quad Mercury 350 Verados. Above deck an outdoor kitchen with a Corian countertop, fiberglass molded sink, a bank of drawers to store utensils, and a stainless-steel Isotherm pullout fridge make entertaining a breeze on the 430 SSC. [formulaboats.com](http://formulaboats.com)



*Glasstream 255 Pro-XS*

## GLASSTREAM

The Panama City, Florida-based builder introduces the 255 Pro-XS (25' LOA, 8'4" beam), perfect for tournament-style fishing and family boat rides. It features the first of

the next generation, inverted stepped hull designed by A.L. Kirkland. Based on the successful 242 platform, the 255 Pro-XS is 15 inches longer in the rear cockpit and 4 inches higher in the gunwale. An aggressive forward deadrise transitions to the aft design and creates a smooth ride while delivering higher fuel economy. The 255 Pro-XS with a single 250-hp engine runs in the high 50 mph range and 60 mph plus with a 350-hp outboard. Forward seating and plenty of storage are now standard, and there's also a full-sized walk-in head below the console. [glasstream.com](http://glasstream.com)





Hinckley Talaria 34 Runabout



## HINCKLEY

At the 2015 Fort Lauderdale Boat Show, Hinckley promised to introduce a yacht that would herald a new golden age of Hinckley runabouts. The sculpted lines of the Talaria 34 Runabout made their debut in the spring in a stunning metallic color set off by signature teak and stainless accents, and nary a boater would accuse the company of overpromising. Inside the Talaria 34R's sleek lines there's a racy helm and co-pilot seating, a conversational U-shaped settee and all the amenities for entertaining. On the dash and at the helm there is room for an oversized display, classic gauges, tilt

steering, and side vents for when things really heat up. [hinckleyyachts.com](http://hinckleyyachts.com)

## HORIZON

Based on feedback from Horizon yacht owners, the E75 was designed with a multifunctional and customizable layout to maximize space. The yacht debuting at FLIBS will be the skylounge version but is also available in an open configuration. The deck features a bar with refrigerator and barbecue grill and an optional Jacuzzi. The forward deck is fitted with sunpads and a dinette for eight guests, while the main



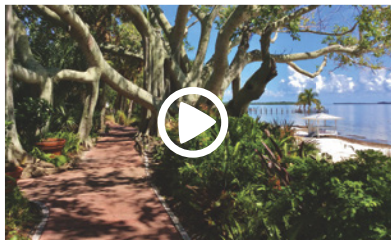
## Useppa Island, Florida

*Paradise Without a Passport*

The best of private island living  
Social memberships now available

*"A truly hidden gem just waiting to be enjoyed by those who appreciate southern sophistication in a casual marine environment."*

Skip Allen, Useppa Island Club Member and  
Publisher, *Southern Boating Magazine*



See what makes Useppa so special  
Go to [useppa.com/island-experience](http://useppa.com/island-experience)



Contact us for more information on becoming a member  
239-283-1061 ■ [membership@useppa.com](mailto:membership@useppa.com) ■ [useppa.com/join-the-club](http://useppa.com/join-the-club)





Horizon E75



Hunt Surfhunter 32

deck aft features a dinette and a teak table for eight. The lower deck on the E75 (75' LOA, 18'6" beam) features three staterooms, each with an individual head. The full-beam master suite features a walk-in closet as well as a his-and-hers ensuite with separate shower and tub. [horizonyacht.com](http://horizonyacht.com)

## HUNT

Classic boats don't just endure; they evolve over time. The Hunt Surfhunter 29 is one such classic. Her enduring hull form has now become the Surfhunter 32 with outboards (32'1" LOA, 10'6" beam). Hunt added an

Armstrong bracket to the 29 hull which makes the boat a true 32, and the deck layout is changed to be much more accommodating. Also debuting at FLIBS is the Hunt Ocean Series 72, the newest yacht in Hunt's Ocean Series. Sporting lines that are classic, purposeful and clearly eager to run, Hunt calls this boat not a motoryacht, not a downeast, but a true Sport Motoryacht. Hunt kept the deckhouse inboard from the hull sheer creating plentiful open deck space and trimmed the roof overhang to create clean lines. The 72 (71'3" LOA, 19'6" beam) delivers a more athletic look that's tuned in to the way owners want to use their yachts today. [huntyachts.com](http://huntyachts.com)

THE NEW

**ROYALFLUSH**®

SEE US AT THE  
FT. LAUDERDALE BOAT SHOW  
BAHIA MAR MARINE  
EQUIP TENT 420



BRAVO



ESPRESSO

STYLE

STAMINA

RELIABILITY

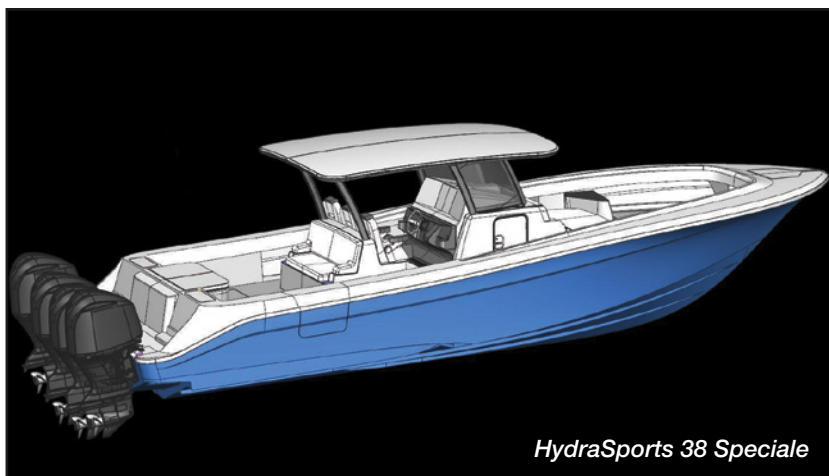
Headhunter is pleased to present an updated style and function to the proven and patented Royal Flush lineup of floor and bulkhead mounted marine toilets. With a revised aesthetic presentation incorporating feedback from installers and designers, these toilets are perfect for updating an existing interior or incorporating into modern vessels.

3380 SW 11TH AVENUE  
FORT LAUDERDALE, FLORIDA 33315  
PHONE: +1 954-581-6996  
HEADMASTER@HEADHUNTERINC.COM  
WWW.HEADHUNTERINC.COM  
WWW.HEADHUNTERINCSTORE.COM



**HEADHUNTER**®  
WWW.HEADHUNTERINC.COM





*HydraSports 38 Speciale*

## HYDRASPORTS CUSTOM

The 38 Speciale is the perfect complement to HydraSports Custom's model lineup, featuring the same Mil-Tough build technique as the classic 53 Sueños. Buyers of the 38 Speciale (38'11" LOA, 11'6" beam) can customize the bow either for fishing or with seating port and starboard. Features include an oversized cockpit with an aft-facing seat behind the captain's helm that holds a rigging station, two 12-volt refrigerators, tackle drawers, and freshwater sink. Triple Garmin screens, a premium sound system, outriggers, radar, autopilot, and fiberglass T-top with a three-sided, tempered glass windshield comprise standard equipment. The interior of the console is outfitted with a marine head, sink and bunk. A vertical rod holding system inside the machinery room allows access to console switches and electronics. [hydrasports.com](http://hydrasports.com)

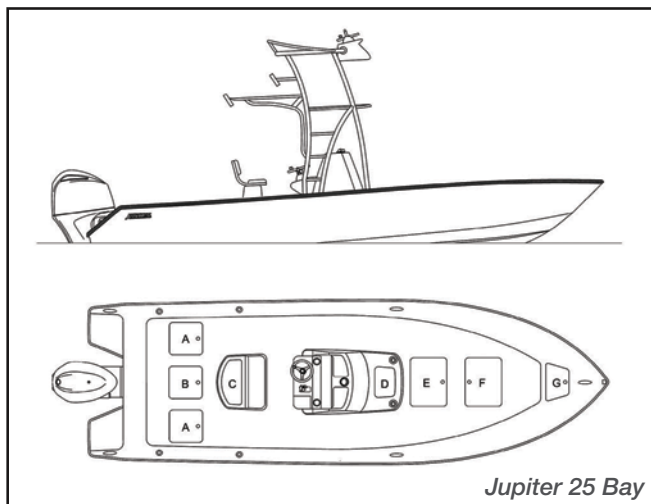
## JEANNEAU

The Leader 30 (30'3" LOA, 25'5" beam) combines a bright interior with comfort and performance. The luxurious cabin features a dedicated bed, and the salon transforms into a



*Jeanneau Leader 30*

double berth. Standard features include a private head, a galley and copious stowage including a large hanging locker. Buyers can choose an optional lacquer finish for the furniture. Most owners will be lounging in the cockpit on the Leader 30 that features adjustable sun lounges on the bow. The L-shape seating in the rear can also be made into a sunpad. Access to the large swim platform is through a starboard walk-through. An integrated sink with refrigerator behind the driver's spot comes in handy on warm days. [jeanneauamerica.com](http://jeanneauamerica.com)



*Jupiter 25 Bay*

## JUPITER

The all-new 25 Bay offers cutting-edge performance and styling typical of a Jupiter Marine build. The boat features the amenities of a traditional bay boat while adding functionality with higher gunnels, flush decks, voluminous tournament live wells, and storage often found on larger offshore center consoles. The 25 Bay (26'1" LOA, 8'6" beam) features all-around versatility with its shallow 14-inch draft that delivers backwater and offshore performance. The ergonomically designed center console has an appealing helm area with owner's choice of factory-installed towers and dual-screen electronics. The standard built-in center console seat incorporates a 130-quart cooler under the cushion. A 100-gallon fuel tank offers plenty of range. With an optional Yamaha F300 engine, the 25 Bay has a top speed of 55 mph. [jupitermarine.com](http://jupitermarine.com)





## MAG BAY

Featuring a hull design from Michael Peters Yacht Design, the 33 Mag Bay is built with performance in mind, yet features robust construction. With a fully loaded weight of 13,000 pounds, the boat appeals to offshore center console enthusiasts seeking a solid ride. Built to fish, the boat has more than 1,400 quarts of fish box storage. Multiple console and seating configurations are available. The 33 Mag Bay (33'6" LOA, 10' beam) comes standard with twin Yamaha 300s that push the hull to a max speed of 50 mph. The California builder (founded by Mike Howarth, co-founder of Cabo Yachts, and his son, Barrett) has ambitious growth plans. In the works are a factory expansion and new model introductions in 2017. [magbayyachts.com](http://magbayyachts.com)



## MARITIMO

Maritimo's M64 has a full-beam ensuite king master, fully-enclosed flybridge, walkaround decks, bi-fold doors, and an enclosed stairway between the bridge and lounge. The M64 (63'11" LOA, 18'7") can be customized to the buyer's preference to include a three cabin, three head configuration—ideal for giving teenage children or guests their own space—or four cabins and two heads. For the exterior choose from the popular Euro-style transom, retain the traditional Maritimo island transom or order a sportfishing transom. Other custom details range from handcrafted timber detailing and convertible berths to relocatable tables and a wet bar. [maritimo.com.au](http://maritimo.com.au)

## MARLOW

The new Marlow Explorer 53E debuted at the 2016 Miami Boat Show, but this will be its first appearance at FLIBS. Exceptional use of space and space-age materials produce the largest master stateroom in this size range, with noteworthy amenities in three cabins. The centerline king master with his-and-her heads offers luxury and comfort for owners and guests. The Marlow 53E (56'7" LOA, 17'3" beam) is powered by reliable and economical John Deere engines, and the machinery room offers full standing headroom and 360-degree access. A 2,000-gallon



fuel capacity allows for long-distance cruising without refueling at speeds 50 percent greater than similarly sized full displacement trawlers. Three additional Marlow Explorers making their first appearance at FLIBS will also be on display: 58E, 66E and 80E. [marlowyachts.com](http://marlowyachts.com)

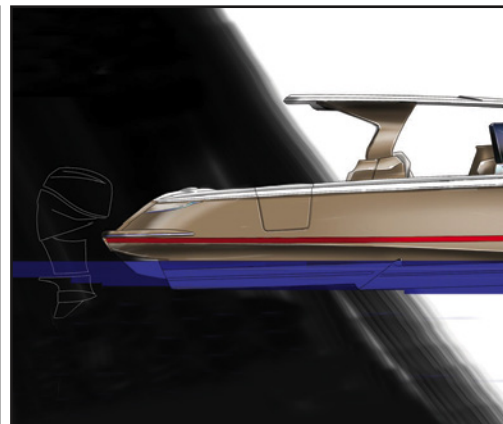
## MIDNIGHT EXPRESS

The new Midnight Express 34' Sportfish/Tender (34' LOA, 11' beam) is designed for fuel efficiency, onboard comfort and high performance. Her 11-foot beam provides stability and a large amount of space without compromising efficiency and speed. The boat's hull and deck are fully infused and cored to reduce weight while improving strength, which results in higher



cruising fuel economy. The 34' Sportfish/Tender tops 60 mph with twin 300-hp outboards and has a cruising range of 350 miles at 35 mph. A proprietary bow design offers a significantly drier and more comfortable ride. [midnightboats.com](http://midnightboats.com)





## MJM

The MJM 50z (55'3" LOA, 15' beam) has been redesigned with a new sliding-glass enclosed bridgedeck. With her advanced design, the 50z is built with a prepreg epoxy, e-glass and Corecell laminate. She is certified ISO Category A for stability and seaworthiness and comes equipped with a Seakeeper gyro stabilizer system. The 50z has fully opening powered windshields and easy-access side opening doors at floating dock height onto a flush deck. The most common power package includes triple Volvo Penta 435-hp IPS 600 engines and drives,

which provides a top speed of 40 knots. A comfortable cruising speed of 35 knots burns 50 gallons per hour. The interior layout includes daytime seating in all cabins, with bunks for up to nine passengers in four private spaces. [mjmyachts.com](http://mjmyachts.com)

## NOR-TECH

Nor-Tech is debuting the 450—powered with four or five outboards. A 12' beam allows for up to two rows of comfortable, three-across seating at and behind the helm. A full-width swim platform facilitates boarding with a center walkway between the twin rear

**The "Flo" has been  
welcoming yachtsmen  
for over 72 years!**

**RESTAURANT**  
**THE FLORIDIAN**

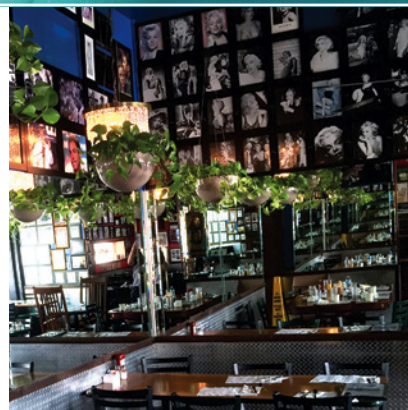


▲ OPEN EVERY DAY OF THE YEAR ▲  
▲ FOR BREAKFAST, LUNCH AND DINNER ▲  
▲ 24 HOURS ▲  
▲ FULL LIQUOR LICENSE ▲



THE  
FLORIDIAN  
RESTAURANT

1410 East Las Olas, Ft. Lauderdale, FL  
954-463-4041





*Nor-Tech 450*



*Novurania Catamaran 24 Diesel*

bench seats. The starboard side of the boat (45' LOA, 12' beam) has a built-in dive door. The T-top frame is integrated into the helm seats, allowing for more cockpit space. An air-conditioned cabin is accessed through a sliding pocket door on the starboard side of the helm. An enclosed full-size head and shower is on the port side. In addition to the large forward berth, the mid-cabin area can be tailored to the needs of the owner. [nor-techboats.com](http://nor-techboats.com)

## NOVURANIA

No matter the final destination, the Novurania

Catamaran 24 Diesel I/O gets you there in style. The yacht tender, also available with an outboard motor, has a twin-hull design and inflatable collar. An opening bow ramp is operated electronically, adjustable to any height and makes off-loading people or cargo a breeze. The bow ramp safely accommodates wheelchairs and motorized power chairs. Various deck layouts are available, with side, center console or custom seating arrangements. Its low profile and stable, dry ride make the new luxury yacht tender (23' LOA, 8'6" beam) perfect for any use. [novurania.com](http://novurania.com)



**Bahamas Catamaran Charters**

[www.bahamascatamaran.com](http://www.bahamascatamaran.com)  
 Captain Craig Doring  
 305.942.6279  
[info@bahamascatamaran.com](mailto:info@bahamascatamaran.com)



### SAIL THE BAHAMAS

- Crewed all inclusive charters
- Customized menus and itineraries
- Four luxurious queen cabins with ensuite bathrooms and showers
- Two SUPs, two kayaks and a tender with plenty of horsepower for wake boarding
- High quality snorkeling equipment
- Bose home entertainment system with indoor and outdoor speaker systems

### EXUMA CAYS

Crystal clear water, excellent snorkeling and white sand beaches, "It's better in the Bahamas". The Exumas are a chain of more than three hundred islands or "cays", most of which are completely uninhabited. Experience the Bahamas aboard our catamaran sailing yachts. From the sand beaches of Staniel Cay to the exciting resort of Atlantis on Paradise Island, welcome aboard and enjoy all aspects of the Bahamian experience!





*Numarine 60Fly*



## NUMARINE

Making its U.S. debut, the 60 Flybridge offers exceptional space on board. The full-beam suite with large picture windows at water level fills the cabin with light and offers picturesque views for those reclining in bed. Three ensuite guest cabins come loaded with stowage space. The use of glass, leather and stainless steel give the 60 Flybridge (60'4" LOA, 16'8" beam) a contemporary feel. The galley is incorporated into the main salon and divided by a useful bar. Flipping open hatches in the windows or electrically lowering the forward side windows in the main salon allows fresh air to circulate throughout the boat. The new 60

Flybridge is the first Numarine yacht to use all LED lighting. [numarine.com](http://numarine.com)

## OCEAN ALEXANDER

The Ocean Alexander 100 is undergoing a redesign since its successful debut in 2014. With world-renowned Evan K. Marshall as the designer, the OA 100 (100'2" LOA, 23' beam) has the feel of a megayacht. The innovative use of aluminum I-beams allows for an open interior that lets in natural light. Owners and guests will also enjoy the incredible views at sea. The OA 100 offers features found on larger yachts, including a newly designed main deck with

# Compass Cay Marina & Villa Rentals

**Vacation in one of our 5 Island Villas  
Treat your feet to your own Private Beach**



**And swim  
with our  
pet sharks.**

**Visit [www.compasscaymarina.com](http://www.compasscaymarina.com) for details or call 772-532-4793 for Villa Rentals.**





*Ocean Alexander 100*



*Palm Beach PB65*

an on-deck master stateroom. With 10 guests in 5 ensuite cabins and with an enclosed skylounge, the owner has design flexibility for entertainment and guest spaces, and in main areas such as the galley, access to staterooms, crew accommodations, and maintenance areas of the yacht. [oceanalexander.com](http://oceanalexander.com)

## PALM BEACH

Palm Beach's flagship yacht, the PB65 (70' LOA, 19'2" beam), has received a substantial upgrade for 2017. The PB65's high-quality build finishes and teak styling blend seagoing competence with beauty. A vast,

light-filled interior features a salon with power windows, spacious cabins and a rear cockpit that can comfortably host up to eight people. Twin Volvo Penta IPS 950 engines deliver a top speed of 32 knots with a range of 700 nautical miles at a cruising speed of 25 knots. Palm Beach is also debuting the new PB42 (46' LOA, 14'6" beam). Her semi-displacement bottom and low center of gravity provide a confident and stable ride. A spacious, light-filled interior includes luxury staterooms with ample headroom throughout. The climate-controlled salon delivers premium comfort, and power windows forward and aft bring nature closer. [pbmotoryachts.com](http://pbmotoryachts.com)

SINCE **1947**



300 N FEDERAL HWY  
DANIA BEACH, FL 33004  
(954) 921-8800  
[COZYCOVEMARINA.COM](http://COZYCOVEMARINA.COM)



2017 34' REGULATOR, TRIPLE 300 YAMAHA, LOADED, 371K



2017 41' REGULATOR, QUAD YAMAHA 350-HP, T-TOP TOWER



2016 ALBEMARLE 25', W/TWIN YAMAHA 250HP, ASK 159K

## ★★★★ IN STOCK IMMEDIATE DELIVERY ★★★★★

23' REGULATOR w/SINGLE 300 HP YAMAHA, FIBERGLASS HARD TOP

25' REGULATOR w/TWIN 200 HP YAMAHA, FIBERGLASS HARD TOP

28' REGULATOR w/TWIN 300 HP YAMAHA, FIBERGLASS HARD TOP

34' REGULATOR FS, TRIPLE 300 HP YAMAHA, FIBERGLASS HARD TOP

## ★★★★ COMING SOON ★★★★★

2017 ALBEMARLE 29' w/TWIN 300 HP YAMAHA, FULL TOWER, GENERATOR, A/C, LOADED!!!







## PERSHING

The Pershing 5X is the first of the X Generation with a focus on performance and innovation. The 5X (54'2" LOA, 14'4" beam) cockpit is protected on the sides by two aerodynamic wings that can be separated or joined to the salon thanks to a unique opening and closing system for the glass door and glazed surface. The main deck features a living room with a dining table, the helm station to starboard and a second forward lounge. The lower deck has been designed around the spacious, full-beam ensuite master. In the prototype layout version, the VIP cabin is located forward and the dinette

is in front of the galley. As an option, a guest cabin or a crew cabin accessible from the deckhouse can replace the dinette. [pershing-yacht.com](http://pershing-yacht.com)

## PRESTIGE

The Prestige 630 is recognizable by the yacht's well-balanced exterior design, its bold, clean lines and the elegance of the bright interior layout. Generous living spaces are designed for comfort with an immense salon, three ensuite cabins, a centerline owner's cabin, and flybridge. By choosing high-tech design solutions, such as construction by infusion and the selection

## Inflatable Boats, Liferafts, Yamaha Outboards & Marine Safety Equipment



See Us at the Fort Lauderdale International Boat Show  
Bahia Mar, Boating Accessories 36



Lifeline Inflatable Services, Inc., 1590 NW 159th Street, North Miami, FL 33169

Ph: 305-621-1500 Fax: 305-621-1730

[www.lifelineinflatable.com](http://www.lifelineinflatable.com) Email: [sales@lifelineinflatable.com](mailto:sales@lifelineinflatable.com)





*Prestige 630*



*Princess 49*

of an IPS 950 pod transmission, the Prestige 630 (62'4" LOA, 16'10" beam) is at the cutting edge of technology. Thanks to Garroni Design, the luxurious interior furnishings reveal a selection of materials, color harmonies and a level of equipment normally reserved for large cruising yachts.

[prestige-yachts.com](http://prestige-yachts.com)

## PRINCESS

Cutting through the waves at speeds up to 40 mph or cruising at an economical 35 mph, the new Princess 49 (50'2" LOA, 14'3" beam) is a joy to

captain. The yacht combines the latest IPS pod drive system with a new modified deep-V hull, providing ease of handling and maneuverability. The social flybridge arrangement includes a twin helm seat, convertible L-shaped sofa and generous seating aft. The spacious deck salon comes alive with light from the panoramic windows and has an ingenious aft-galley layout, which can be fitted with a full-height fridge/freezer. Below deck there's a full-beam owner's stateroom, a forward guest cabin with the option of scissor berths and a generous two-berth starboard cabin.

[princessyachts.com](http://princessyachts.com)

# VALVTECT<sup>®</sup>

## Marine Diesel



**Better Performance, Enhanced Engine Protection.**

If you are not running a true marine formulated diesel fuel, then it's time you switch to ValvTECT<sup>®</sup> Marine Diesel and immediately begin experiencing these important benefits. ValvTECT<sup>®</sup> Marine Diesel Fuel is specially formulated to . . .

- **PROTECT:** Keeps fuel system free from bacteria and sludge.
- **OPTIMIZE:** Improves engine performance and fuel economy.\*
- **EXTEND:** Stabilizes fuel for two years or more.
- **ENHANCE:** Extra lubricity improver, water dispersant & cetane improver reduce maintenance costs and extend engine life.

*When cruising beyond the ValvTECT<sup>®</sup> Marine Diesel coverage area, make sure to take along performance proven ValvTECT<sup>®</sup> Diesel Additives!*

Visit [www.ValvTECT.com](http://www.ValvTECT.com) or Call (800) 728-8258








**PROTECT ■ OPTIMIZE ■ EXTEND ■ ENHANCE**

©2016 ValvTECT Petroleum Products, Buffalo Grove, IL. \*Based on clean up of fuel system deposits.

VISIT US AT THE FORT LAUDERDALE INTERNATIONAL BOAT SHOW BOOTH# 133





## REGULATOR

The versatile Regulator 31 is equipped with twin F300 Yamaha engines, a massive cockpit, oversized tackle center, 228-quart fishbox, and additional sportfishing features. Head off shore with ease and confidence with SeaStar Optimus electronic power steering with tilt helm and the newly-enhanced 3X Deluxe Tackle Center, featuring a sink, baitwell and an abundance of storage. The deep-V hull, designed by renowned naval architect Lou Codega, is matched by low bow rise and peak performance for a perfectly balanced ride. Taking a cue from the Regulator 41, the all-new 31 (31'4" LOA, 10'4" beam) also features a starboard dive door, integrated

forward seat backrests, stand-up head compartment with electric head, and 6-gallon holding tank along with other lifestyle amenities designed to maximize comfort off shore. [regulatormarine.com](http://regulatormarine.com)

## RIVA

The iconic European builder debuts Rivamare (39' LOA, 11'6" beam) with a distinctive, double-curved, laminated, crystal window at the cabin level and an eye-catching windscreen consisting of five double-curved, laminated, crystal glass sections set in a stainless-steel frame. An innovative stern beach area incorporates a hatch with built-in mahogany

# YACHT PROTECTOR

**SEE YOUR BOAT'S CONDITIONS  
& LOCATION AT ANYTIME!**

## SMART WIRELESS SECURITY & TRACKING SYSTEM

**SET YOUR GEO-FENCE TO PROTECT  
YOUR BOAT ANYWHERE!**

• **COST EFFECTIVE**

• **EASY TO INSTALL**

• **BOAT INSURANCE DISCOUNTS  
AVAILABLE WITH YACHT PROTECTOR!**

**THE YACHT GROUP**  
featuring **YACHT CONTROLLER**  
Visit [YachtProtector.com](http://YachtProtector.com) for more information





Rivamare



Scout 215 XSF

steps that swings open to a large surface; two specially designed ergonomic sunpads can be positioned over the hatch. The cockpit is furnished with a large C-shaped sofa set around a folding table in mahogany and stainless steel, and can be protected by a retractable Bimini. Engineers and designers created a luxurious open interior space consisting of a galley, head with separate shower, and bow living area that converts into a double bed. [riva-yacht.com](http://riva-yacht.com)

## SCOUT

The all-new forward seating 215 XSF (21'5" LOA, 8'6" beam) combines comfort, style and performance into one

center console that's built on Scout's revolutionary fuel-saving NuV3 hull design. The deck offers ample standard amenities for everything from serious fishing to comfort cruising.

Standard features on board the 215 include forward seating in the bow as well as a forward sun lounge/coffin box complete with a cushion. Other standards are port and starboard swim platforms with ladder, powder-coated aluminum leaning post with backrest, 72-quart Igloo cooler, and a Fusion Bluetooth stereo with four 6-inch speakers. Select options include an aluminum T-top with aft spreader light, T-bag and rocket launchers, Bimini top, and powder-coated leaning post with 65-quart Yeti cooler. [scoutboats.com](http://scoutboats.com)



SAUNDERS  
*Yachtworks*  
251-981-3700  
[saundersyacht.com](http://saundersyacht.com)

Serving the Gulf Coast  
**Full Service • Vessel Refit**







Sea Ray Fly 460

## SEA RAY

The new Fly 460 (46'8" LOA, 14'12" beam) is spacious for its size, with storage solutions that increase livability including an expanded flybridge made for entertaining. Both helm stations feature Raymarine widescreen displays, and an available joystick control system provides for effortless docking and control of twin 550-hp Cummins inboards. Inside, the full-beam aft ensuite master and additional forward ensuite guest cabins offer customization options. The sunlit salon features a convenient aft galley and a flush-threshold multi-pane door that opens onto the social cockpit. Sea Ray's new L550 Fly (56'3" LOA, 15'7" beam) utilizes advanced technologies including vacuum infusion structures and a state-of-the-art digital switching system and three cabins. A well-appointed flybridge is geared for entertaining. Twin 850-hp Caterpillar inboards are available with joystick control. [searay.com](http://searay.com)



Sunseeker Predator 68 MK II

## SOUTHPORT

The solid ride of the Southport 33 is now available with all of the features and creature comforts of a megayacht tender. The new Southport 33 LX (32'6" LOA, 10'8" beam) features a wraparound forward seating area for a comfortable lounge space. This new arrangement features more tender-like amenities, including extra refrigeration, a microwave, coffeemaker, food and beverage storage, and preparation areas. The aft cockpit, a space once reserved for fishing, now

becomes a far more inviting place to entertain and relax. With the addition of an L-shaped wraparound lounge in the aft port corner and wet bar with refrigerator and bottle and glass



Southport 33 LX

storage in the leaning post, the aft cockpit rivals the front of the boat for comfort and social amenities. [southportboats.com](http://southportboats.com)

## SUNSEEKER

The redesigned Predator 68 MK II (71'2" LOA, 16'7" beam) features a cockpit door that lowers into the yacht's deck, opening it up for warmer climates. A full-width sliding sunroof draws in the sunlight while a smart widow design provides natural light for the living space. A generous salon offers U-shaped seating, bar and social seating at the stern. Powered by MAN V8-1200 engines or upgrade to MAN V12-1550. The new Manhattan 52 (56'5" LOA, 16' beam) is the smallest flybridge model Sunseeker has introduced in more than a decade. The yacht is designed to maximize entertainment, light and living space, with curved glass, a unique main deck layout and well-equipped bathing platform, all ideal for entertaining. Powered by Volvo Penta D11-725 or Volvo Penta IPS-950 engines. [sunseeker.com](http://sunseeker.com)



*Vicem Custom 65' Flybridge*



## VICEM

One word describes the Custom 65' Flybridge at FLIBS: spacious. With her 65-foot LOA and 18'5" beam, there's sufficient interior volume for owners to choose from two- and three-cabin designs. Configurations offer a luxurious galley-up or galley-down choice, with a convertible office or a dinette below. The galley-up version offers a below-deck layout with three cabins plus an additional berth accessible from the VIP cabin for eight guests. Powered by twin Volvo Penta D11 625-hp engines, the 65' Flybridge is equipped for long voyages and offers a cruising range

of 915 nautical miles at 10 knots, with a top speed of 19 knots. Designed by Vicem's in-house design team, the 65' Flybridge has a classic look and offers a quiet, smooth ride. [vicem.com](http://vicem.com)

## VIKING

Now an integral part of the Viking Yachts lineup, the 37 Billfish (37'8" LOA, 13'10" beam) is built to be a canyon-ready tournament contender that's equally at home fishing for blue marlin in The Bahamas or Pacific sailfish in Costa Rica. The day-boat style offers unfettered access to the 86-square foot cockpit

# SOUTHERN<sup>®</sup> BOATING

# 3

## Ways to Stay Connected

### PRINT



**\$25.00**  
per year  
(12 issues)

### DIGITAL



**\$14.99**  
per year  
(12 issues)

### E-NEWSLETTER



**FREE**  
(48 issues)

## Subscribe Today!

[southernboating.com/subscribe](http://southernboating.com/subscribe)





Viking Yachts 37 Billfish



Wajer 55

equipped with a bait freezer, tackle stowage, a transom door with a lift gate, insulated fishboxes, and a transom livewell. The open salon provides all-weather protection with a comfortable U-shape dinette and hi-lo fiberglass table that converts to a bunk opposite a cushioned lounge. At the end of the day there's plenty of room to relax in a comfortable environment—a significant element missing from today's wide-open, large center-console boats. [vikingyachts.com](http://vikingyachts.com)

## WAJER

Based on the award-winning 37- and 38-foot

models, the Wajer 55 is a perfect balance of beauty and performance. Comfortable seats will keep the pilot and passengers secure when running in big seas. When lounging in the intracoastal, Wajer provides large sunpads aft and near the transom. The swimming platform on the Wajer 55 can also be used as a swimming ladder or gangway. Built-in steps with teak decking make getting in and out of the water easy. Below-deck, Wajer will customize the cabin but most buyers of the smaller models opt for a small cabin for the family to get out of the sun.

[wajer.nl](http://wajer.nl)




## Zodiac Inflatable Boats, Liferafts and Marine Safety Equipment



[www.zodiacfortlauderdale.com](http://www.zodiacfortlauderdale.com)

[sales@zodiacfortlauderdale.com](mailto:sales@zodiacfortlauderdale.com)

Zodiac of Fort Lauderdale is powered by Lifeline Inflatable Services , who has been serving South Florida since 1991 with Sales & Service of Inflatable Boats, Yamaha Outboard Motors & Liferafts





laminated glass integrally molded into the hull. The integrated stern boarding area and veranda dining opens up to the main deck salon and formal dining area. The main deck galley is secluded from guest view and includes a casual breakfast nook dinette. Private crew quarters forward on the lower deck include a captain's stateroom, two crew double staterooms and a crew's mess. Powered with twin 2,600-hp MTU diesel engines, the W125 (125' LOA, 26'2" beam) cruises around 20 knots. [westportyachts.com](http://westportyachts.com)

## WELLCRAFT

Wellcraft's new 262 has everything a fisherman needs for a day on the water. The center console has a fiberglass T-top, ample rod holders and rod storage, port and starboard baitwells/livewells, raw water wash-down, and port and starboard fish boxes with macerators. The bow area features a unique sliding cooler for multiple seating layouts, and the optional dive door makes boarding and departing easier. A deluxe leaning post delivers with a backrest and cooler, and a folding aft seat provides more room to fish as well as extra seating when open. The 262 (26'4" LOA, 9' beam) is designed to handle twin engines with up to 500 horsepower. [wellcraft.com](http://wellcraft.com)

## ZURN

The Zurn/NEB 38 was designed for fishing and diving, and with jet drives powered by twin Volvo Penta D-6 diesel engines you'll get to your favorite spot quickly.



## WESTPORT

With room for 10 people and a six-person crew, the new Westport W125 is steeped in luxury. The yacht features a full-width master stateroom on deck forward with his-and-her baths. Four ensuite guest staterooms enjoy natural light and outside views thanks to hull windows of toughened,

The open cockpit offers an impressive amount of space for a 38-foot boat and includes removable bait wells and fish lockers as well as storage space for rods and diving gear. The transom seat folds up out of the way for additional room. Below deck the Zurn/NEB 38



(44'2" LOA, 12' beam) has an elegant open interior with room for two people. Ceiling accents frame the queen-sized berth with ample drawer storage beneath. Aft of the berth is a head to port, and to starboard a galley with a sink, microwave, small DC fridge, Corian countertop and cabinet storage. [zurnyachts.com](http://zurnyachts.com)