

Front and Center

Anglers, wakeboarders, family boaters, performance seekers, and yacht tender buyers are finding the center console design delivers the best of boating in a versatile package.

By Doug Thompson

As center console designs have evolved, it's no longer clear that one boat is a hard-core fishing machine and another is a luxurious day cruiser. The lines separating center consoles have crisscrossed and blurred, and are now being rewritten. On any given boating day, you will see a brightly colored performance vessel with four powerful outboards come charging by, while a utilitarian white-hulled fishing boat with a single motor bobs in its wake.

Though vastly different, they are cousins in the center-console boating family. The basic design is the same: a center-console driver helm with a bow in the front and

cockpit in the back. Today's top builders offer center consoles in lengths from 15 to 47 feet and larger. Bottom designs now feature stepped hulls that bring out the best performance, while the interiors offer lavish cabins and heads.

Most center consoles are rigged for fishing, or at least offer the equipment for wetting a line. However, there are an increasing number of luxury center consoles being built that will never have a fish on board, unless that fish is served as sushi.

Here's a look at some of the top offerings in the center-console class, from the hard-core fishing types to the dreamy pleasure-craft variety.



MIDNIGHT EXPRESS 43' OPEN

The Midnight Express 43' Open (LOA: 43', Beam: 12' 6") is a semi-custom center console with class-leading internal space. All Midnights are fully infused and cored, and use carbon fiber in key weight-saving locations. The proprietary twin-stepped hull, in addition to the high-tech build process, makes for a fast, smooth-running and stable boat ride. When powered with quad Mercury Verado 350-hp outboard engines, the boat runs more than 80 mph at top end. Equip the boat with quad Seven Marine 627-hp engines and the 43' Open tops 100 mph. Additionally, Midnight Express incorporates a special hull shape called ISR, which helps make the hull extremely dry when running in poor conditions. This boat can be customized with a wide choice of available power and electronics options, in any color imaginable. midnightboats.com

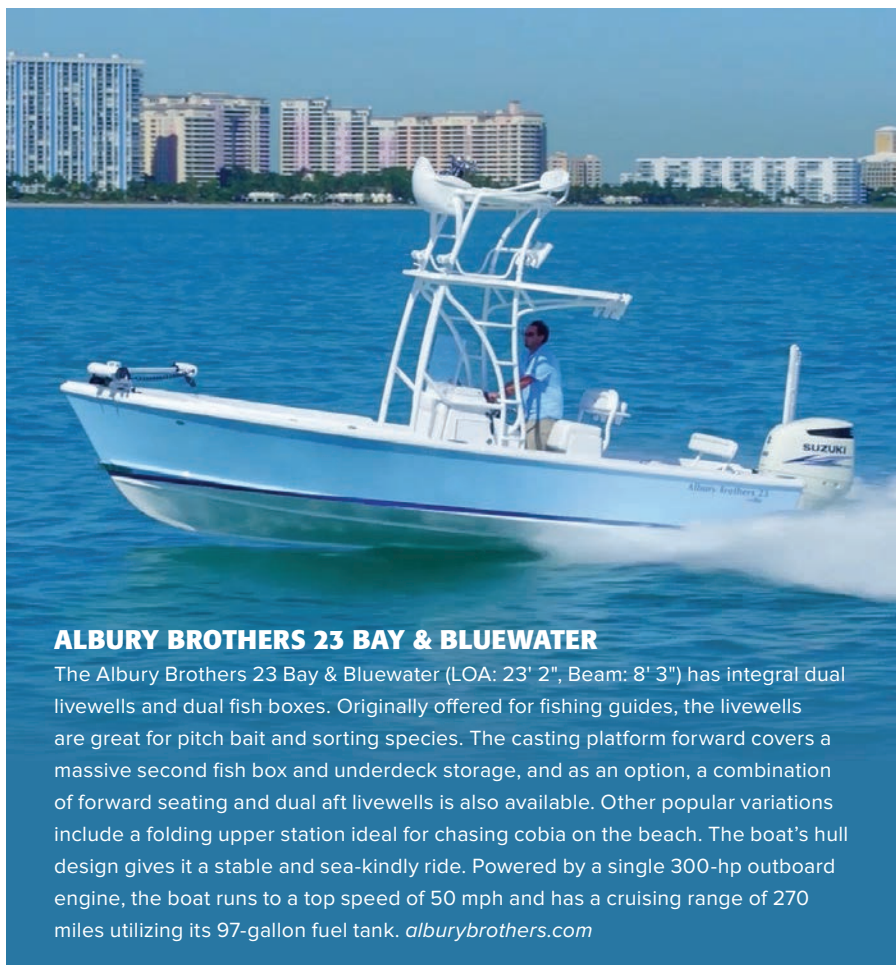


Sea Force IX 41.5 Sport CC

The Sea Force IX 41.5 Sport CC (LOA: 41' 5", Beam: 12') is the first in a new line of 41.5- to 56.5-foot boats from the Palmetto, Florida-based builder. The launch date for hull No. 1 is mid-summer 2017. When equipped with 1,200 maximum horsepower, the boat is expected to run at a top speed of approximately 60 mph and cruise at 40 mph, with an estimated 400-plus-mile range using the 500-gallon fuel tank. The 41.5 Sport CC also carries 60 gallons of fresh water, has a 15-gallon holding tank and carries 30 gallons of diesel for the optional generator. The boat is loaded with standard features like dual-transom side-entry boarding doors, electric head, AGM batteries, LED lighting throughout, microwave, AC/DC refrigerator, air conditioning in the console cabin as well as plumbed to the helm, three-wide helm seating with flip-up bolsters and armrests, and full powder-coated aluminum pipework. All construction will be 100 percent composite utilizing high-quality vinylester resins, epoxy, high-density PVC core, and the most advanced multidirectional knitted fiberglass available. seaforceix.com

Everglades 253cc

The 253cc (LOA: 24' 9", Beam: 8' 6") hits the water with a complete redesign as a hybrid bay/offshore boat, including the best features of two Everglades favorites—the 243cc and the 273cc. Pack your Yeti Hopper—the 253cc is equipped with two Hopper holders to easily load and unload coolers for drinks and ice, in addition to the huge built-in 87-quart EverCooler beneath the forward console seat. The low-profile, powder-coated bow rails and pop-up cleats combine with the 91-square-foot cockpit to provide space to move. Port and starboard rod storage and dry storage, lockable rod storage with cushioned protection under the forward bow seating, a 26-gallon livewell, and a 69-gallon in-floor insulated fish box make the 253cc ready to fish. Powered by a 300-hp Yamaha outboard engine, the boat runs to a top speed of 46 mph, and cruises at 26 mph for a range of 292 miles utilizing the 100-gallon fuel tank. evergladesboats.com



ALBURY BROTHERS 23 BAY & BLUEWATER

The Albury Brothers 23 Bay & Bluewater (LOA: 23' 2", Beam: 8' 3") has integral dual livewells and dual fish boxes. Originally offered for fishing guides, the livewells are great for pitch bait and sorting species. The casting platform forward covers a massive second fish box and underdeck storage, and as an option, a combination of forward seating and dual aft livewells is also available. Other popular variations include a folding upper station ideal for chasing cobia on the beach. The boat's hull design gives it a stable and sea-kindly ride. Powered by a single 300-hp outboard engine, the boat runs to a top speed of 50 mph and has a cruising range of 270 miles utilizing its 97-gallon fuel tank. alburybrothers.com



DUSKY 242 BAY

The Dusky 242 Bay (LOA: 24' 2", Beam: 7' 8") features a front casting platform that is both spacious and stable, and the stern area offers plenty of room to maneuver while fishing. The versatile Dusky 242 Bay has been designed to handle the shallower bay waters, while still being offshore-friendly, making her a well-rounded, seaworthy craft. Standard features include hydraulic steering, binnacle control, twin pedestal chairs, port and starboard rod racks, and bow and anchor storage compartments. She has a 100-gallon fuel capacity and is available with a wide variety of outboard motors for the power-driven boater. dusky.com



Rossiter 17 Center Console

The Rossiter 17 Center Console (LOA: 17' 4", Beam: 7') offers style, balance and big-water security. Weighing 2,340 pounds, this unsinkable seven-passenger boat features a 27-gallon fuel tank. Equipped with a 115-hp Yamaha outboard engine, it jumps up on plane in seconds with little bow rise and quickly reaches a top speed of 50 mph. The deep-V hull and solid construction handle big water, coastal cruising or a run around the lake. The center cockpit provides robust storage, protection from the wind and salt spray and comfortable, reversible, insulated helm seating for two. The 17 Center Console features all-composite construction with teak accents, positive flotation and a composite stringer system. The boat is finished with non-skid sole, swim platform and foredeck for additional safety. Premium gelcoat reduces U/V degradation and factory protection for osmotic blistering and print-through. rossiterboats.com



BlackWater 43 SF

When the going gets rough in the BlackWater 43 SF, you probably won't notice. Due to an aggressive bottom design and an overbuilt 18,000-pound dry-weight hull, the 43 SF (LOA: 43', Beam: 11' 11") carves through the waves.

When powered by quad Mercury Verado 350-hp engines, the 780-gallon fuel tank has a range of 650 miles. Standard features include a dive door, second-row seating, oversized

T-top, and air conditioning in the cabin and at the helm station. The console cabin has more than six feet of headroom and offers a large berth, toilet and shower. The helm can house up to two 24-inch Garmin screens along with all the electronics and features needed. When the sun goes down, custom color-changing LED lighting sets the mood while the amazing sound system comes to life.

blackwaterboats.com



CENTURY 2301 CC

As flagship of the Century Boats single-engine fleet, the 2301 CC (LOA: 23', Beam: 8' 6") provides a solid platform built for speed, agility and range. Designed as a definitive fishing machine, the 2301 CC delivers contemporary styling, luxury and performance. Weighing 4,150 pounds without engines, and powered by a single 300-hp Yamaha outboard, the 2301 CC jumps onto plane in 3.4 seconds and tops out at more than 50 mph. At a cruising speed of 28 mph, the boat's range is 418 miles. The 2301 CC offers fishing features and comfort amenities needed for a demanding day on the water. Standard items include a powder-coated leaning post with tackle storage, raw-water wash down, freshwater shower, and trim tabs with lighted indicators. Also standard: a powder-coated hardtop with integrated spreader lights, onboard marine head and a wraparound bow seating area. *centuryboats.com*





Southport 33 ST

The Southport 33 ST (Sport Tower) builds upon the heritage of Southport as a stable, dry and seaworthy offshore boat, and now adds the advantage of the performance of triple engines and extra fishing capability of the Sport Tower. The 33 ST (LOA: 32' 6", Beam: 10' 8") is a variant of the 33 FE (Family Edition), which shows the versatility of the Southport 33 platform. Powered by triple Yamaha or Suzuki 300-hp engines, the 33 ST reaches 63 mph and cruises comfortably anywhere between 25 and 40 mph, with no added motion from the all-aluminum and fiberglass fully customizable sport tower. Like all Southport models, she corners like on rails and never shows any signs of confusion or uncertainty no matter the sea conditions. Once you arrive on the fish, the massive forward and aft cockpits leave plenty of room for setting up gear and working fish, with the helmsman high above it all. southportboats.com

SEAVEE 370Z

The SeaVee 370Z (LOA: 37', Beam: 10' 6") features a new twin-stepped, cross-ventilated hull with patented SpeedRail® Technology. The hull incorporates multiple lifting bodies with unique geometry for a fixed trim angle throughout a wide range of speeds. The design helps the boat achieve maximum fuel efficiency and offers predictable handling when making hard turns. Capable of planing at only 16 mph, the 370Z handles rough seas with ease and tops out at above 65 mph with triple 350-hp engines. Range is 644 miles at 45 mph utilizing the 460-gallon fuel tank. Turns are sharp, crisp and stable. The model is available in two configurations: as a performance-oriented tournament fishing machine with a wide-open deck layout, tower options and loads of storage capacity, or the Luxury Edition (LE) with molded-in forward seating, a variety of rear seat configurations and console shower and toilet facilities. seaveeboats.com

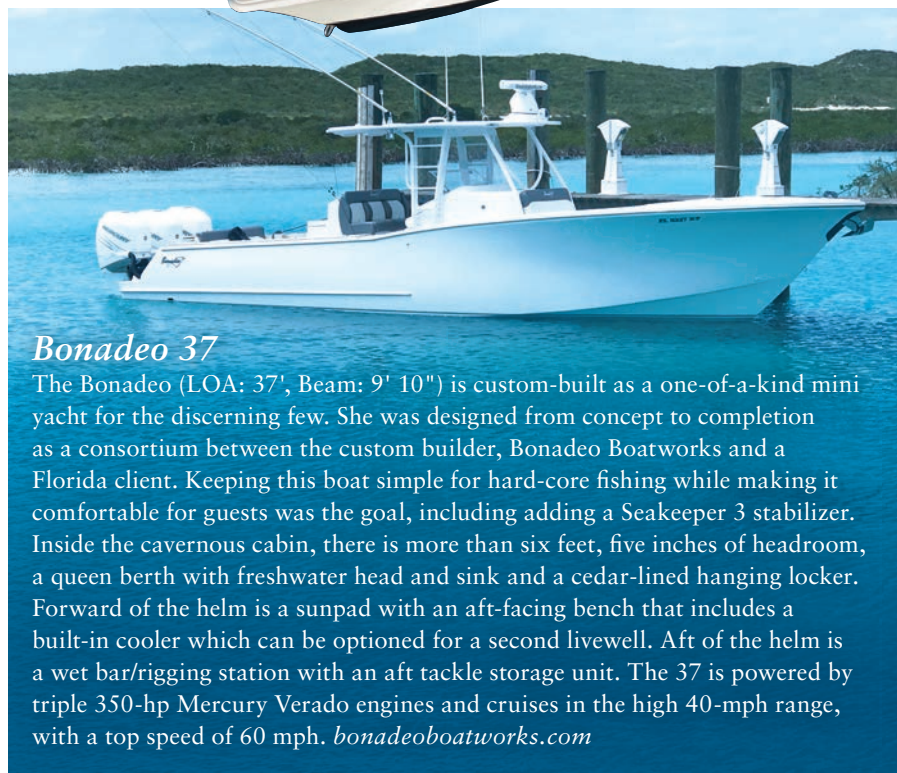


VENTURE 39' OPEN

The Venture 39' Open Center Console (LOA: 39' 6", Beam: 10' 8") offers a combination of speed, safety and comfort. A flat, open-deck layout and below-decks fish and storage boxes make this an ideal vessel to handle most any weather condition. Standard features include a signature hardtop with starboard-side pass-through, a walk-in console with six feet of headroom, a 55-gallon livewell in the transom, an oversized top-loading anchor locker, and an insulated cooler seat in front of the console with three-piece seat cushions. With three tower options—T-top Tower, Upper Station Tower or a Full Tower Upgrade—and an 11-gallon holding tank, the Venture 39' Open is a logical choice for tournament fishing, scuba diving adventures or simple trips to the sand bar. venturebyamerican.com

Bonadeo 37

The Bonadeo (LOA: 37', Beam: 9' 10") is custom-built as a one-of-a-kind mini yacht for the discerning few. She was designed from concept to completion as a consortium between the custom builder, Bonadeo Boatworks and a Florida client. Keeping this boat simple for hard-core fishing while making it comfortable for guests was the goal, including adding a Seakeeper 3 stabilizer. Inside the cavernous cabin, there is more than six feet, five inches of headroom, a queen berth with freshwater head and sink and a cedar-lined hanging locker. Forward of the helm is a sunpad with an aft-facing bench that includes a built-in cooler which can be optioned for a second livewell. Aft of the helm is a wet bar/rigging station with an aft tackle storage unit. The 37 is powered by triple 350-hp Mercury Verado engines and cruises in the high 40-mph range, with a top speed of 60 mph. bonadeoboatworks.com





INTREPID 475 PANACEA

The 475 Panacea (LOA: 47' 6", Beam: 13' 8") handles fishing and cruising with luxury and style. An expansive cockpit offers rear seating and fish boxes/storage lockers. The cabin features a roomy head with a shower, vanity and sink, and is well-equipped for overnighting with a spacious V-berth and 16,000 BTU air conditioner. The galley includes hard-surface countertops, a refrigerator, sink, and high-end cabinetry. Power choices are either triple or quad outboard engines ranging from 350-hp Yamaha F350s to 627-hp Seven Marine engines. Equipped with four F350s, the 475 Panacea will top out at over 60 mph, and with four 627s she runs over 72 mph. Her signature transverse-stepped hull is designed to maximize fuel efficiency and stability. Effectively creating two separate hulls, the boat is supported on plane at twice as many points as conventional hulls, providing a smooth, dry ride. The 475 Panacea's helm features a state-of-the-art platform for electronics, fold-down armrests, footrests, LED lighting, and a conveniently placed cooler. intrepidboats.com

Glasstream 240 CC

The Glasstream 240 CC (LOA: 24', Beam: 8' 2") is built with customer opinion and feedback in mind, and debuts its updated design for the 2018 boating season. The Glasstream 240 CC is the third model to be featured with the fourth-generation inverted stepped hull designed by A.L. Kirkland. Like the 255 Pro-XS, which is the first boat of this hull generation, the 240 CC is 15 inches longer in the rear cockpit and four inches higher in the gunwale. An aggressive forward deadrise transits to the aft design, while delivering higher fuel economy at the same time. The 240 CC is equipped with a single 150-hp engine that powers the boat to a top speed in the high 50-mph range. Forward seating and plenty of storage are standard, and there's also a full-size walk-in head below the console. glasstream.com



STRIPER 200 CC-S

The Striper 200 CC-S (LOA: 20' 2", Beam: 8' 2") is built with the essentials for great days on the water. Akin to its larger brethren, the 200 CC-S comes standard with two in-floor fish boxes for keeping those big catches fresh and a huge lockable center console area for storage. In addition, the center console offers an option for a Porta-Potti head with pump-out, increasing the convenience and comfort of the boat. The 200 CC-S is built to fish, cruise or even tube, making it an all-around platform for anglers and families. The boat's bottom design features Striper's signature V-Trac hull. The 200 CC-S performs like a bigger vessel and has one of the largest fuel capacities in this class at 91 gallons. Offered standard with a galvanized trailer, owners can take their Striper 200 CC-S to everyday fishing spots or wherever the fish might be biting. striperboats.com

Nor-Tech 450 Sport CC

The Nor-Tech 450 Sport Center Console (LOA: 45', Beam: 12') is a high-performance multi-purpose weekender for active owners with a predilection for fast and thrilling machines. Every detail has been designed with absolute precision. The Nor-Tech 450 Sport CC features a cockpit with an abundance of seating areas creating comfortable social settings, ample storage, a premium sound system, fish boxes, and dedicated dive tank storage. The full-size cabin with a cozy wraparound sofa leads to an oversized berth, wet bar and a private head with a sink and stand-up shower. Unique cabin windows provide exceptional views of the water and can go from clear to complete privacy with the press of a button. Solid hull-bottom construction consists of hand-laid fiberglass sandwich and Kevlar. Several power options are available to get cruising speeds from the mid 60s to the low 70s and top speeds into the mid 80s. The Nor-Tech 450 Sport CC offers fully customizable paint, stitching and Italian hardware.

nor-techboats.com



MAKO 414 CC

The MAKO 414 CC (LOA: 41', Beam: 11' 11") is the largest and most powerful boat in the builder's 50-year history. A maximum of 1,675 horsepower pushes the boat to more than 60 mph, so it's one of the fastest boats in its class. MAKO's aggressive deep-V hull provides a smooth, dry ride. The boat cruises at 35.5 mph and has a range of 360 miles utilizing the 566-gallon fuel tank. She sports two 50-gallon bait wells, as well as two 511-quart macerated and insulated in-floor fish boxes. In addition, the boat is offered with CZone™ digital switching, traditional throttles plus Mercury JPO (joystick positioning for outboards), electric helm seats, and a walk-down freshwater head with sink, storage, shower, and sleeping berth. Available in standard, Bluewater Family Edition and Sportfish Edition, the 414 CC is backed by the MAKO Assurance Warranty. *mako-boats.com*





PATHFINDER 2500 HYBRID

The Pathfinder 2500 Hybrid (LOA: 24' 9", Beam: 8' 6") offers a double-stepped hull, a bustle transom and two four-bank console rod racks. With a Yamaha 300-hp outboard engine, the 2500 Hybrid tops out at close to 61 mph. The boat achieves nearly four miles to the gallon at 36 mph. Her 16-degree deadrise, slightly higher freeboard and generous bow flare translates into exceptional open-water running performance, yet the boat still only draws 13 inches at rest with a full load. The 2500 Hybrid combines the elevated casting deck forward with a more open cockpit aft, giving the angler the ability to see fish in shallow water off the bow and still comfortably bottom fish or troll off the stern in big water from the security of the cockpit. Standard features include flip-up rear seats, a deluxe tackle station with convertible bolster seats, a 35-gallon livewell, and a 43-gallon insulated fish box. pathfinderboats.com



Regulator 25

The Regulator 25 (LOA: 25' 2", Beam: 8' 10") comes equipped to fish the canyons in comfort, while offering everyday fun for the family. The newly enhanced 2017 Regulator 25 delivers big boat features, including a walk-through tuna door, T-top with surfboard edge and SeaStar Solutions® Optimus Electronic Power

Steering with tilt helm. The 25 is equipped with a full range of fisherman favorites, such as a 46-gallon transom livewell/fish box, 408-quart in-deck fish box and abundant storage. In addition, there is a 64-quart cooler in the console seat, a standard head and spacious seating. The boat's deep-V design with 24-degree deadrise helps it handle rough water, and an extremely rugged molded fiberglass stringer system adds an enormous amount of strength to the hull. When powered by twin Yamaha F200 four-stroke engines, the boat runs to a top speed of 50.6 mph and cruises at 31.2 mph. regulatormarine.com



BAHAMA BOAT WORKS 37LE

The Bahama 37LE (LOA: 38' 1", Beam: 11') shares the same unique seakeeping abilities and matchless ride of its larger sibling, the Bahama 41. The result is a versatile bluewater craft with unusual performance and range capabilities for its size. This is by no means a "fair weather" vessel only comfortable at the sand bar; she is a serious fishing machine. The Bahama 37 is equipped with the LE Package (Luxury Edition) for those looking for more cruising comforts, such as customized deluxe helm, transom and forward seating, side steps, custom teak inlay decking, seagrass material in console, retractable waste receptacle drawer, and individual footrests at the helm. Other special options include the gunwale-mount marlin tower. The maximum power is 1,200 horsepower, and the boat offers a 475-gallon fuel tank and 60-gallon freshwater tank.

bahamaboatworks.com



Scout 380 LXF

The 380 LXF (LOA: 38' 6", Beam: 12' 1") is built on Scout's epoxy-infused, double-stepped, fuel-efficient hull. Powered by triple Yamaha 350-hp engines, the boat runs to a top speed of 61 mph and cruises at 39.5 mph. Innovation abounds on the 380 LXF, with an optional hydraulic port-side beach platform with synthetic teak and optional Seakeeper gyro stabilizer. Other choices include an electronically activated SureShade integrated retractable aft awning and Scout's optional patented electronic articulating rocket launchers. The 380 LXF comes standard with two Garmin MFD 7616 touchscreens at the helm, a full transom walk-through platform with Armstrong dive ladder, an inward port-side boarding door, gas-shock-assisted hatches, and powder-coated hardtop with curved-glass enclosure. The boat has one cabin featuring a stove cooktop, microwave, flush-mount 32-inch LED TV, galley sink, drawer refrigerator, enclosed shower/head area with toilet, sink and mirror, and convertible queen berth.

scoutboats.com

MARLOW PROWLER 375 HAVANA

The Marlow Prowler 375 Havana (LOA: 37' 6", Beam: 11' 8") offers a host of amenities, such as a full-size head with shower, natural lighting and ventilation with more than six feet of headroom. The huge V-berth and generous storage lockers round out the comfort of the below-decks accommodations. Crafted in Marlow's environmentally friendly manufacturing facility in Xiamen, China—under the same standards as Marlow Explorers—the Prowler is built to cross historic routes like Key West to Havana. With a draft of just under two feet and equipped with high-performance twin Mercury 400-hp racing outboards, many fishing grounds are within reach for angling excursions. The Prowler runs to a top speed of up to 40 knots and is built with Marlow's proprietary Full Stack® infusion process. A flush transom door allows large fish to be brought into the aft cockpit area, which features twin 200-quart built-in fish boxes, livewell with pump and expansive tackle storage.

marlowyachts.com





Buddy Davis 28 CC

The 28 Center Console (LOA: 28', Beam: 9' 6") from Buddy Davis is filled with luxurious appointments. However, make no mistake, the 28 CC was bred to fish. Heritage and technology meet, and all the hulls are vacuum-infused with vinylester resin and Dyvinacell-cored, making them strong, quiet and solid. Standard options include a forward fish box (large enough to fit two bigeye tuna), rocket launcher rod holders, livewell, plenty of storage, and a rear insulated fish box/cooler. The huge helm dash can accommodate two 16-inch Raymarine glass bridge displays, autopilot and two VHF radios. Powered by twin 300-hp Yamaha engines, the boat has a top speed of nearly 60 knots and achieves 1.4 miles per gallon at 30 knots. That provides a range of 360 miles at a cruising speed of 30 knots. buddydavisboats.com

JUPITER 38 HFS

The Jupiter 38 HFS (LOA: 38' 2", Beam: 10' 7") is a versatile center console that is fully customizable. The boat's hull design provides a smooth, dry ride in challenging sea conditions. With three motor options—dual Yamaha F350s, triple Yamaha F300s and triple Yamaha F350s—customers may equip their Jupiter with the power desired. Exhilarating tournament performance comes easily with a top speed of 69 mph with triple 350s, and the 38 HFS can comfortably cruise at 35.9 mph with a fuel burn of 1.31 mpg with the triple 300s. The Jupiter 38 HFS is a proven tournament winner that features premium angling necessities, including hybrid forward seating, two 104-gallon fish boxes, a bait prep center with a 53-gallon stand-up livewell, six rod holders, four rod rack sets, multiple storage compartments, and a customizable T-top tower package. This 38 HFS was designed to not only accommodate the serious angler, but also provide room, comfort and amenities for family cruising or day boating. jupitermarine.com



Grady-White Canyon 306

Grady-White's Canyon 306 center console (LOA: 30' 6", Beam: 10' 7") takes on bluewater fishing with her SeaV2® hull performance and true self-bailing cockpit, while offering more creature comforts than ever. The dynamic helm design is highly functional and versatile and has ample room for two 16-inch displays with dedicated space for multiple electronics. Practicality continues in the bow with forward-facing, fold-away backrests adding to an already family-friendly lounge area. The re-engineered T-top with full-height windshield, dry-storage and LED lighting provides protection from rough weather conditions. Powered by twin Yamaha 300-hp outboard engines, the boat runs to a top speed of 50.5 mph on the SeaV2 hull, and cruises at 30.2 mph for a range of 478.5 miles using the 290-gallon fuel tank. gradywhite.com



Pursuit S 368

The S 368 (LOA: 37' 11", Beam: 12') features an integrated hardtop and windshield system, transom extensions and class-leading styling detail for luxury center consoles. At the helm, Pursuit pairs Garmin electronics with Yamaha engine controls for seamless operation of the mechanical and navigation functions. Below the center console are amenities including a fully enclosed head, convertible sofa berth, large storage areas, and galley. Above-deck social zones in the bow area, at the helm and aft in the cockpit give plenty of guest space. A forward sunpad and teak tables provide room for entertaining. Anglers will appreciate a 24-gallon livewell and two fish boxes, along with the raised mezzanine seat in the wide-open cockpit. When powered with triple Yamaha 300-hp engines, the S 368 runs to a top speed of 49 mph, cruises at 32.1 mph and has a range at cruise of 317 miles utilizing the 425-gallon fuel tank. pursuitboats.com



A TOUCH OF TECH

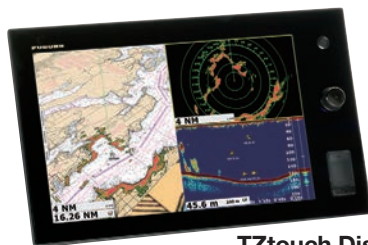
FURUNO

NAVnet

TZ2
touch



Available as
bracket mount
or flush mount



TZtouch Displays



- AIS • GPS • Radar
- Fish Finder • Satellite Weather

iPhone &
iPad apps
FREE



NavNet Remote
— iPad app only —
allows you to control your
NavNet TZtouch unit remotely



NavNet 3D DRS Antenna

AVAILABLE AT



TWO LOCATIONS:

405 NW South River Drive, Miami, FL 33128
155 East Blue Heron Blvd., Riviera Beach, FL 33404
(800) 826-5716 • www.LangerKrell.com

EDGEWATER 158CS

The Florida builder's 158CS (LOA: 15' 1", Beam: 6' 7") Center Console offers Perma-Grid construction and a deep-V hull design to give it the feel of a much larger offshore boat. Powered by a Yamaha 70-hp engine, the 158CS is expected to run to a top speed of approximately 33 mph. The versatile 158CS features a huge cockpit with self-bailing decks, the unsinkability every EdgeWater is known for, and a full-beam bench seat. In the bow, there is a large insulated storage box, and the Center Console has a clamshell design for easy access and additional storage. A big transom platform with an aft boarding ladder makes beach days even more enjoyable.

ewboats.com 



YOUR SINGLE SOURCE FOR MARINE SANITATION NEEDS

- **Raritan Marine Heads -**
Manual, Electric, Raw Water, Fresh Water, Vortex-Vac
- **Holding Tanks**
- **Macerator Pumps**
- **Treatment Systems**
- **Sanitation Accessories**
- **In-line Raw Water Filters**
- **Saniflex Hose -**
Extremely flexible for tight bending

Exclusive US distributor for:



- **Monitored Ball Valves**
- **Manual & Electronic Y-Valves**
- **Check Valves**
- **Seacocks**
- **Vented Loops**

Raritan offers a complete line of engineered products and components to design, service and maintain your vessel's marine sanitation system.

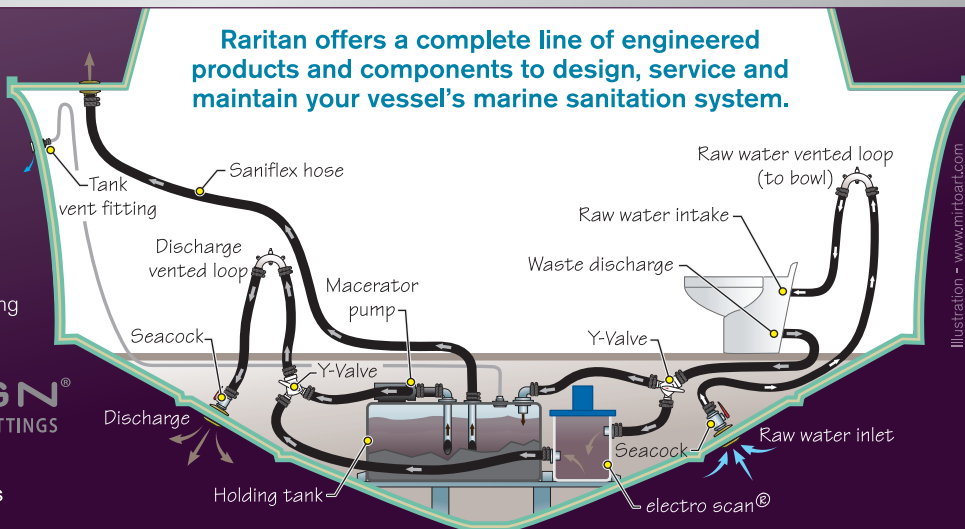


Illustration - www.mirtoart.com

www.RaritanEng.com

FL Location: 954 525-0378

NJ Location: 856 825-4900